



2017

# Percentage of Population Unemployed in the Greater Richmond, Virginia Region

John V. Moeser

*University of Richmond, [jmoeser@richmond.edu](mailto:jmoeser@richmond.edu)*

Taylor Holden

*University of Richmond, [taylor.holden@richmond.edu](mailto:taylor.holden@richmond.edu)*

Evelyn Jeong

*University of Richmond*

Jacob Salamy

*University of Richmond*

Follow this and additional works at: <http://scholarship.richmond.edu/poverty>



Part of the [Public Policy Commons](#), [Social Welfare Commons](#), and the [Urban Studies Commons](#)

---

## Recommended Citation

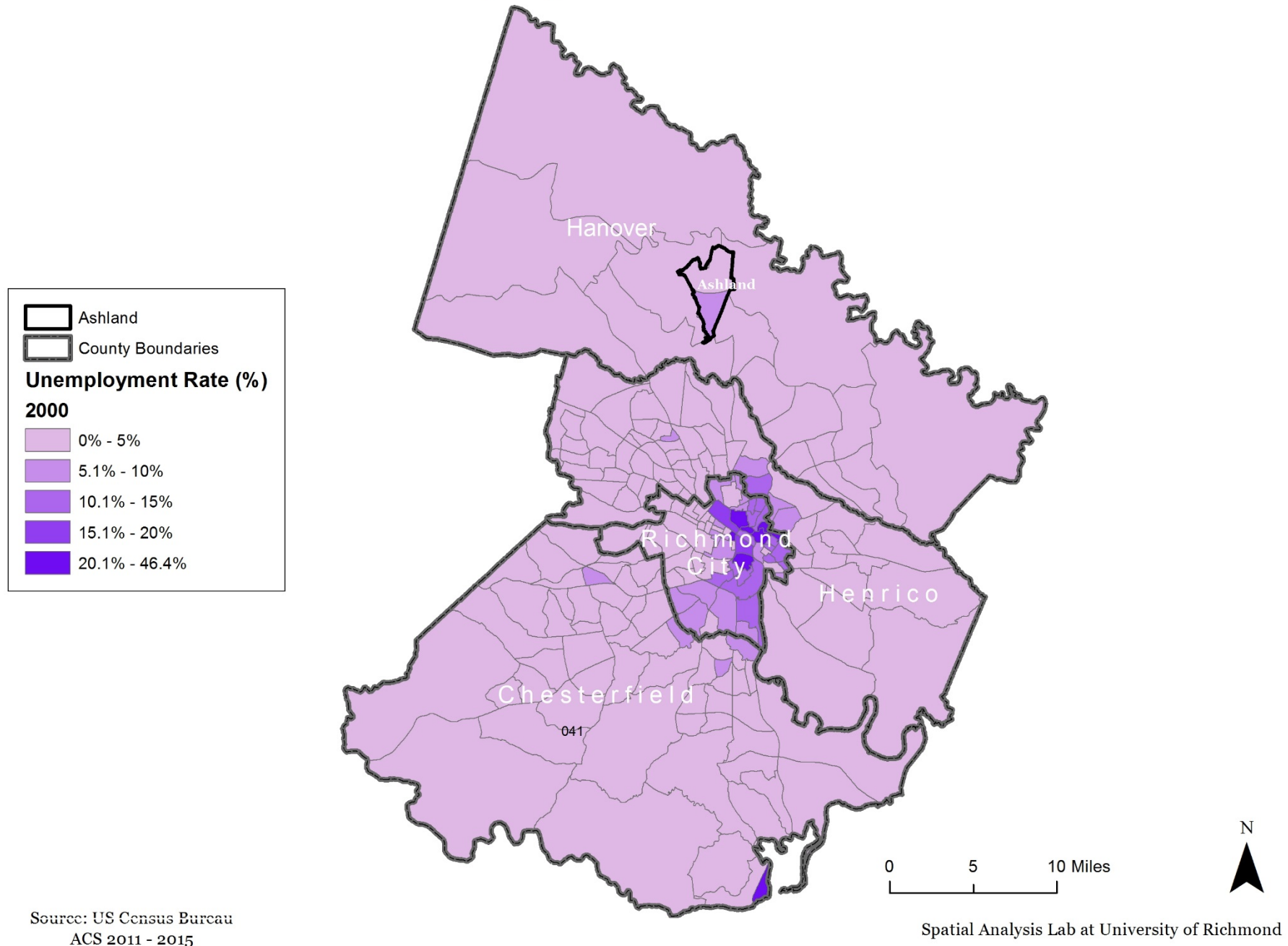
Moeser, John V., Taylor Holden, Evelyn Jeong, and Jacob Salamy. *Unpacking the Census: 2015 Updates*. Data Analysis and Reports. Richmond, Virginia: Bonner Center for Civic Engagement, University of Richmond, 2017.

This Data Analysis and Reports is brought to you for free and open access by the Bonner Center for Civic Engagement at UR Scholarship Repository. It has been accepted for inclusion in Poverty in Metropolitan Richmond by an authorized administrator of UR Scholarship Repository. For more information, please contact [scholarshiprepository@richmond.edu](mailto:scholarshiprepository@richmond.edu).

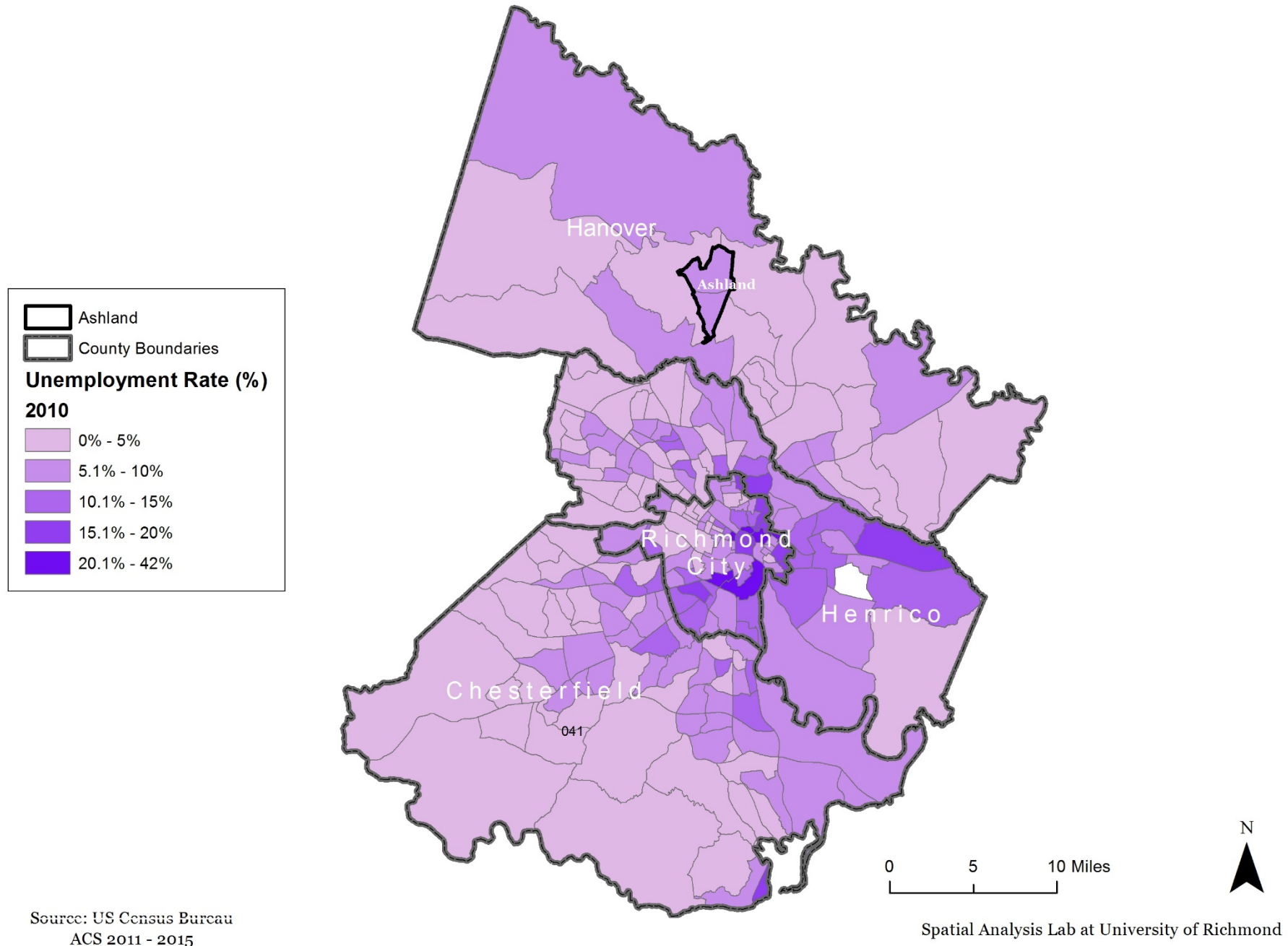
# Percentage of Population Unemployed 2000-2015

- ▶ Based on American Communities Survey (ACS) 5 year Estimates
- ▶ Current US Unemployment Rate: ~ 5%
- ▶ Only accounts for those actively in the workforce (U3 unemployment)

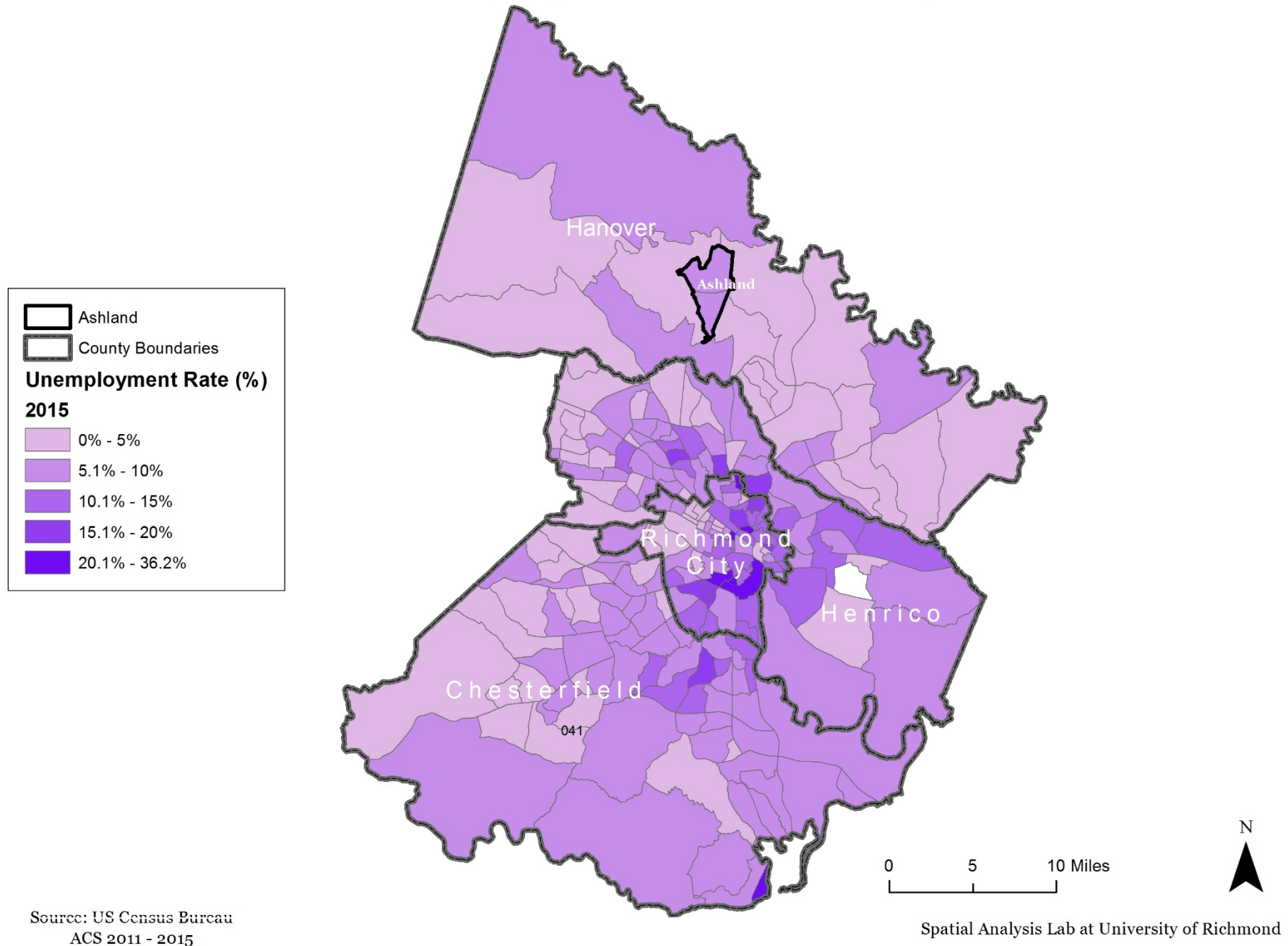
# Unemployment Rate in 2000



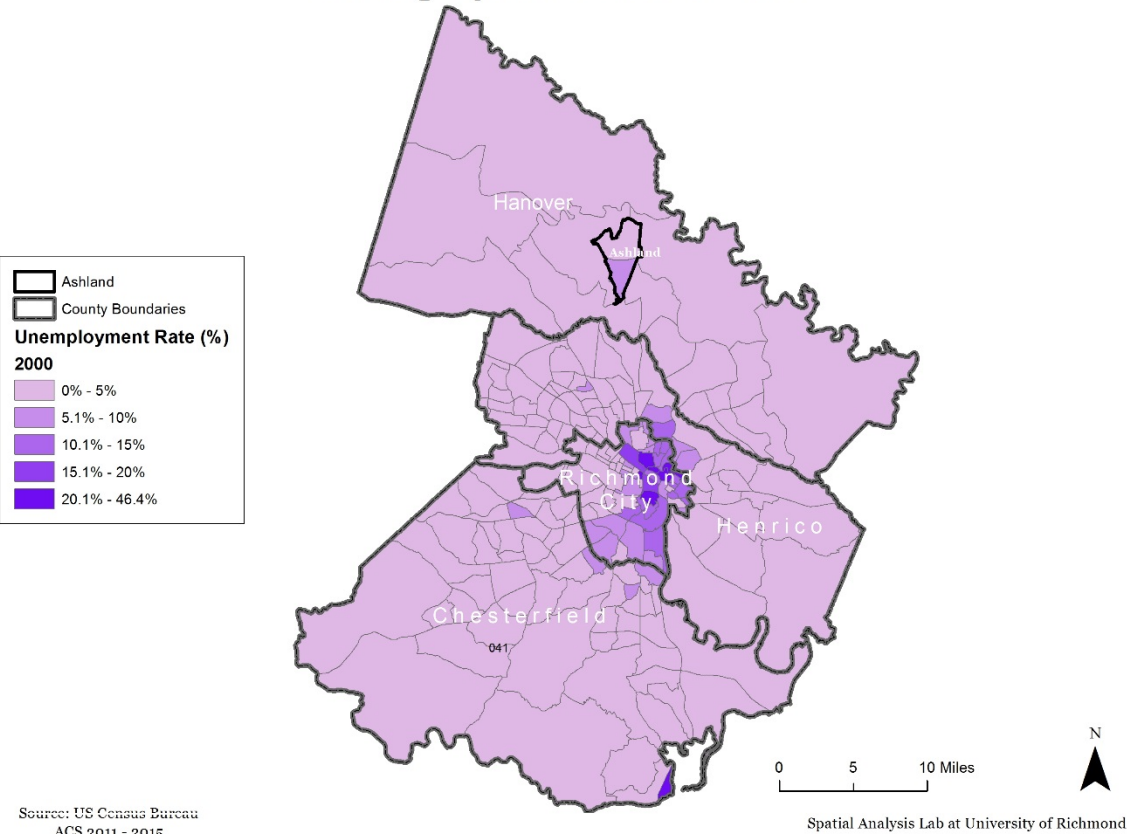
# Unemployment Rate in 2010



# Unemployment Rate in 2015



# Unemployment Rate in 2000



# Unemployment Rate in 2015

