

4-16-2008

The University of Richmond Wind Ensemble

Department of Music, University of Richmond

Follow this and additional works at: <https://scholarship.richmond.edu/all-music-programs>



Part of the [Music Performance Commons](#)

Recommended Citation

Department of Music, University of Richmond, "The University of Richmond Wind Ensemble" (2008). *Music Department Concert Programs*. 441.

<https://scholarship.richmond.edu/all-music-programs/441>

This Program is brought to you for free and open access by the Music at UR Scholarship Repository. It has been accepted for inclusion in Music Department Concert Programs by an authorized administrator of UR Scholarship Repository. For more information, please contact scholarshiprepository@richmond.edu.

MX080416P

UNIVERSITY OF RICHMOND LIBRARIES



3 3082 01001 3786

THE DEPARTMENT OF MUSIC

**Presents
in Concert**

**The University of Richmond
Wind Ensemble**

David Niethamer, Conductor

Wednesday, April 16, 2008

7:30 p.m.

**Camp Concert Hall
Booker Hall of Music**



The University of Richmond Wind Ensemble

PICCOLO

Julie Busch

FLUTE

Julie Busch

Katie Moyer

Heather Premerlani

Julia Zeller

OBOE

Melissa Mullaney

CLARINET

Kathryn Einerson

Megan Bersani

Anne R. Jenkins

Laura Schillinger

E♭ CLARINET

Michelle Higby

CONTRABASS

CLARINET

Nathan Verilla

BASSOON

Rosanna Nunan

ALTO SAXOPHONE

Eric Switick

Amanda Marzaliano

TENOR SAXOPHONE

Austin Bourdon

BARITONE SAXOPHONE

Cain Bonniwell

HORN

Jennifer Hoff

Katie Mulroy

Drew Howell

Tiara Davis

TRUMPET

Chris Manieri

Alex Moore

TROMBONE

Sharon Petway

EUPHONIUM

James Neary

TUBA

Emil Mentz

PERCUSSION

Ari Corson

Jared Harrison



Program

American Overture for Band Joseph Wilcox Jenkins
(b. 1928)

Sleep Eric Whitacre
(b. 1970)

Concertpiece for Bassoon Burrill Phillips
(1907-1988)
Rosanna Nunan, *bassoon*

Handel in the Strand Percy Grainger
(1882-1961)

Intermission

The Phantom Regiment Leroy Anderson
(1908-1975)

Concerto No. 3 Wolfgang Amadeus Mozart
Allegro (1756-1791)
arr. Robert J. Bardeen
Jennifer Hoff, *horn*

Rhapsody Jerry Brubaker
(b. 1946)
James Neary, *euphonium*

Finale from the New World Symphony Antonin Dvořák
(1841-1904)
arr. Eric Leidzen

About the Conductor



DAVID NIETHAMER began his conducting career at Lebanon Valley College, where he conducted a run of "A Funny thing Happened on the Way to the Forum" and was student conductor of the college orchestra.

Appointed Principal Clarinetist of the Richmond Symphony in 1979, he appeared thirteen times as soloist with the orchestra during his 23-year tenure.

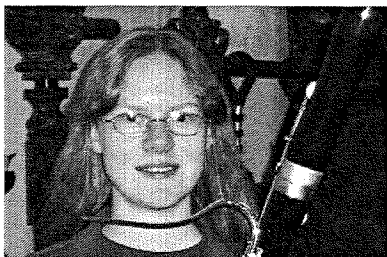
In addition to his orchestral career, Niethamer has maintained a busy schedule of chamber music, recitals and teaching. He has performed at the Albemarle Festival with the Monticello Trio and the Brentano Quartet, with the Kandinsky Trio, the Composers Quartet, and the Lenox String Quartet. From 1982 until 1992, Niethamer was the Clarinetist and Artistic Director of the Roxbury Chamber Players and Artistic Director of the Richmond Chamber Players' "Interlude" series from 1994 through 1997.

An interest in the work of living composers has led to collaborations with Karel Husa, Gunther Schuller, and Ned Rorem. In Virginia, Niethamer has worked closely with Allan Blank, Judith Shatin, and Joel Suben. Niethamer's recordings are on the Opus One, MMC, and Elan labels.

In 2002, after 23 years at the "other end of the baton", Niethamer became the conductor of the University of Richmond Wind Ensemble. He has also guest conducted the Longwood University Wind Symphony and the Commonwealth Winds. Niethamer continues to perform as a clarinetist with the National Gallery Orchestra in Washington D.C., the Virginia Symphony, and with the Richmond Chamber Players.

About the Soloists

ROSANNA NUNAN is from Danville, Pennsylvania, and studies bassoon with Jonathan Friedman, principal bassoonist of the Richmond Symphony. After attending Pennsylvania's All State Band festival for high school students in 2002 and 2004, Rosanna decided to further her bassoon studies in college.

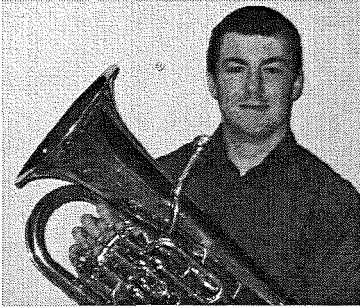


In addition to the Wind Ensemble, she has played in several chamber ensembles and the University Orchestra, and studied harpsichord for three years with Richmond faculty member Dr. Joanne Kong. Rosanna gave her senior recital this past February. A double major in English and Music, she will continue her English studies at the graduate level at the University of California Irvine in the fall of 2008.

JENNIFER S. HOFF is a senior at the University of Richmond, working toward a degree in Music Performance on French Horn with minors in Mathematics and Spanish. She also plays cello and has participated in many ensembles for both instruments including the University of Richmond Wind Ensemble, the University of Richmond Orchestra, and a woodwind quintet.



She gave her senior recital March 28 and is currently preparing for her senior thesis. Her music career has included two performances each at the National Band and Orchestra Festival at Carnegie Hall and with the Massachusetts All-State Band. She also toured Europe with the Sound of America National Honor Band. She is the Vice President of Recruitment for her sorority, Alpha Chi Omega, and the President of Phi Kappa Mu, the music honor society. After graduation, Jennifer hopes to attend graduate school to study instrumental music education.



JAMES NEARY started playing the euphonium at the age of 11 in his home town of Rochester, NY. In middle school and high school, he played for many NYSSMA ensembles, including the New York State Conference All State Wind Ensemble his senior year of high school.

At the University of Richmond, he has been part of many musical ensembles, including the Wind Ensemble, University Choir, Jazz Ensemble, Pep Band, as well as several Chamber Ensembles. James is currently studying psychology with the goal of becoming a clinical psychologist. He credits his mother with his musical guidance from a very young age.





Fall 2007—Spring 2008
Department of Music Free Events
Camp Concert Hall, unless otherwise noted

Anne Guthmiller, *soprano*
Dmitri Shteinberg, *piano*
Sunday, September 16—3p

Geoffrey Haydon, *piano*
Wednesday, September 19—7:30p

Family Weekend Concert
Friday, September 28—7:30p

Paul Hanson, *piano*
Sunday, September 30—3:00p

David Esleck Trio
Wednesday, October 3—7:30p

Balinese Wayang Kulit (Shadow Theater)
Gusti Putu Sudarta, *Puppeteer*
Sunday, October 7—3:00p
Cousins Studio Theater (Modlin)

Third Practice
Electroacoustic Music Festival
Friday, October 19 through
Saturday, October 20

Duo Piano Recital
Doris Wylee-Becker, *piano*
Richard Becker, *piano*
Sunday, November 4—3:00p

University Choir and Schola Cantorum
Sunday, November 11—3:00p

University Wind Ensemble
Sunday, November 18—7:30p

UR Jazz Ensemble & Jazz Combo
Monday, November 19—7:30p

Bruce Stevens, *organ*
Monday, November 26—7:30p
Cannon Memorial Chapel

Barry Salwen, *piano*
Wednesday, November 28—7:30p

Cuba Documentary Premiere and UR Jazz
Combo: "Cuba: Rhythm in Motion"
Friday, November 30—7:30p

University Chamber Music
Ensembles—
Monday, December 3—7:30p
University Orchestra
Wednesday, December 5—7:30p

University Balinese Gamelan & Dance
Thursday, December 6—7:30p

Annual Christmas Candlelight Concert
Sunday, December 9: 5 & 8:00p
Cannon Memorial Chapel



Spring 2008

Jeffrey Riehl, *tenor*
Kenneth Merrill, *piano*
Assisted by Jennifer Cable, *soprano*
Monday, January 14—7:30p

Richard Becker, *piano*
Sunday, February 3—3:00p

An Evening of Music by Béla Bartók
Matt Albert, *violin*
Matthew Duvall, *percussion*
Jennifer Cable, *soprano*
Paul Hanson, *piano*
Joanne Kong, *piano*
Ray Breakall, *percussion*
Monday, February 4—7:30p

Jeremy McEntire, *flute*
Sunday, February 24—3:00p

eighth blackbird
"The Only Moving Thing"
Wednesday, March 26—7:30p

Jazz and Brazilian Combo Concert
Wednesday, April 2—7:30p

University Choir & Schola Cantorum
Sunday, April 6—3:00p

University Balinese Gamelan and
Dance
Monday, April 7—7:30p

University Orchestra
Wednesday, April 9—7:30p

UR Jazz Ensemble & Jazz Combo
Monday, April 14—7:30p

University Wind Ensemble
Wednesday, April 16—7:30p

University Chamber Music Ensembles
Monday, April 21—7:30p