

1-12-2005

Beethoven's An Die Ferne Geliebte and Schumann's Liederkreis

Department of Music, University of Richmond

Follow this and additional works at: <https://scholarship.richmond.edu/all-music-programs>



Part of the [Music Performance Commons](#)

Recommended Citation

Department of Music, University of Richmond, "Beethoven's An Die Ferne Geliebte and Schumann's Liederkreis" (2005). *Music Department Concert Programs*. 347.

<https://scholarship.richmond.edu/all-music-programs/347>

This Program is brought to you for free and open access by the Music at UR Scholarship Repository. It has been accepted for inclusion in Music Department Concert Programs by an authorized administrator of UR Scholarship Repository. For more information, please contact scholarshiprepository@richmond.edu.

MX050112P

January 12, 2005 7:30 PM
Camp Concert Hall
The University of Richmond

UNIVERSITY OF RICHMOND LIBRARIES



3 3082 00882 3964



Ludwig van Beethoven

An Die Ferne Geliebte Op. 98

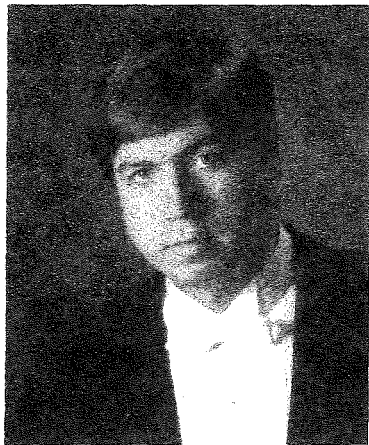
Robert Schumann

Liederkreis Op. 39



James Weaver Baritone

Joanne Kong Piano



Since finishing his studies with Max van Egmond at Amsterdam's Sweelinck Conservatory, Baritone James Weaver has been a frequent performer with many of the finest orchestras and chamber ensembles in North America and Europe. He has sung with such diverse groups as Collegium Vocale Ghent, The Academy of the Begynhof, the Dutch experimental theater group GRIF, Ensemble Courant, the Orpheus Band, Philharmonia Baroque Orchestra, Dryden Ensemble, Santa Fe Pro Musica, the Seattle and Portland Baroque Orchestras, the Baltimore Consort, Newberry Consort, Columbus Consort, and the Ricercar Consort. An acclaimed Bach specialist, he has worked with Joshua Rifkin and The Bach Ensemble, Jeffrey Thomas and the American Bach Soloists, Kenneth Slowik and the Smithsonian Chamber Players, the Washington Bach Consort, the San Francisco Bach Choir, and the Bethlehem Bach Choir. Recent engagements include performances with the Washington Bach Consort, Portland Baroque Orchestra, and the American Bach Soloists. A sought-after interpreter of Lieder, Mr. Weaver has collaborated with many gifted pianists, including Dalton Baldwin and Kenneth Slowik. He is a founding member of the baroque chamber group Capriole, an ensemble

based in the Virginia Tidewater area, which specializes in the performance of 17th-century chamber music. Mr. Weaver is on the faculty of a number of music workshops, including the San Francisco Early Music Baroque Workshop, Longy International Baroque Institute, and Rutgers University Antheneum. He has made numerous recordings with the American Bach Soloists on Koch International and can also be heard on the Dorian, Smithsonian, Channel Classics, Ricercar, Loft, and Newport Classics labels. A native of Detroit, Mr. Weaver is currently a member of the vocal faculty at the University of Richmond, and resides in Williamsburg, Virginia, where he is Music Director at Williamsburg Presbyterian Church.

Recognized as an artist of exceptional versatility, harpsichordist and pianist Joanne Kong has received critical praise for her "great finesse and flexibility" (The Washington Post), "remarkable technical ability" (The Oregonian), and "superb artistry" (San Antonio Express-News). The Richmond Times-Dispatch has described her as "truly one of the finest musicians to call Richmond home. She plays with grace, style, and thorough understanding of the works at hand. She has performed to critical acclaim at numerous venues including the Los Angeles and Oregon Bach Festivals, Abbey Bach Festival, Texas Bach Collegium, Houston Harpsichord Recital Series, Memphis Chamber Music Society, Stotsenberg Concert Series, San Antonio Festival, Los Angeles Monday Evening Concert Series, Virginia Waterfront International Festival of the Arts, the Royal Netherlands Embassy, Columbia University, Harvard University, and orchestral performances under William McGlaughlin, Myung-Whun Chung, Alberto Bolet, Samuel Baron, and George Manahan. A gifted collaborator, she has performed with some of the world's finest musicians including the Shanghai String Quartet, Eugenia Zukerman and Zheng Zhou, and has been master class pianist for James Buswell, Timothy Eddy, Robert Bloom, David Shifrin, Harvey Pittel, Gwendolyn Koldofsky, Arleen Auger, Phyllis Bryn-Julson, Roberta Alexander, Roberta Peters, and Gian Carlo Menotti. As a specialist in the music of Bach, she has received recognition for her interpretations of the complete Well-Tempered Clavier and Goldberg Variations. Her critically-acclaimed 2-CD set of the Goldberg Variations on harpsichord, and Diabelli Variations on piano, is available on the BRIOSO label. A native of Southern California, Ms. Kong is the recipient of national and international honors including performance fellowships from the American Academy of the Arts in Europe and the Bach Aria Festival, designation as a Laureate in the 1983 National Beethoven Foundation Fellowship Auditions, three Ruth Lorraine Close Fellowships, and the Irl Allison Grand Prize in the 1985 International Piano Recording Competition. In addition to concertizing, her performances have been broadcast over numerous radio stations including National Public Radio, WQXR in New York and WFMT in Chicago. She is in frequent demand as a piano, harpsichord, vocal and chamber coach, and has been recognized for her exceptional work with gifted young musicians. Dr. Kong is currently the Director of Accompaniment and coordinator of chamber music programs at the University of Richmond. A graduate of the University of Southern California and University of Oregon, she has studied with Joanna Hodges, Malcolm Hamilton and Victor Steinhardt, and performed in the master classes of Leon Fleisher and Lorin Hollander. In Richmond, Ms. Kong has appeared as part of the Richmond International Festival of Music, the Richmond Chamber Players INTERLUDE series, and has performed with the Shanghai Quartet, the Richmond Symphony, Richmond Ballet and Richmond Philharmonic. She has been the recipient of four Touring Grants from the Virginia Commission for the Arts.

