

1999

# How About a Box, a Pear, and a Grapefruit

Blythe King

Follow this and additional works at: <http://scholarship.richmond.edu/messenger>



Part of the [Fine Arts Commons](#)

---

### Recommended Citation

King, Blythe (1999) "How About a Box, a Pear, and a Grapefruit," *The Messenger*: Vol. 1999: Iss. 1, Article 32.  
Available at: <http://scholarship.richmond.edu/messenger/vol1999/iss1/32>

This Artwork is brought to you for free and open access by UR Scholarship Repository. It has been accepted for inclusion in The Messenger by an authorized administrator of UR Scholarship Repository. For more information, please contact [scholarshiprepository@richmond.edu](mailto:scholarshiprepository@richmond.edu).

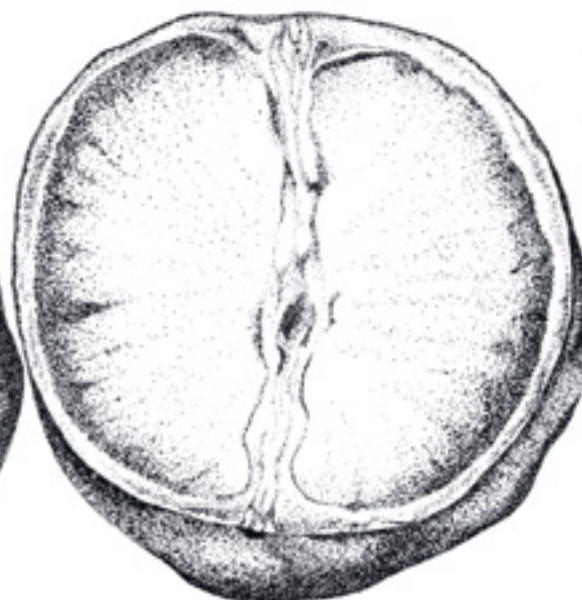
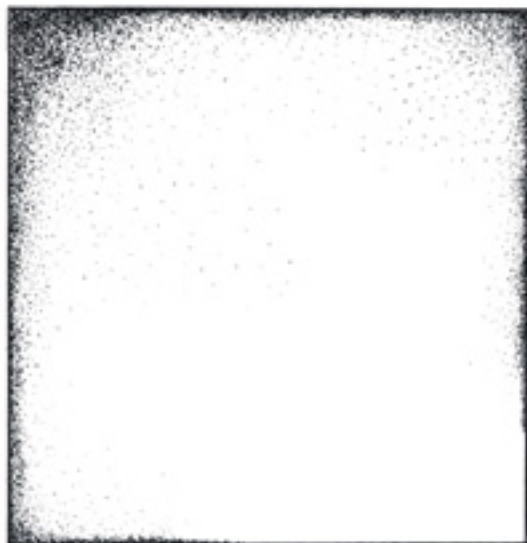
DAVID SHRIMP } IN THE TRADITION OF HAIKU

AUTUMN

*The squirrels gather nuts  
While I buy Planters in the  
Supermarket aisles*

WINTER

*Once I slipped and fell  
Into an icy river  
I forgot that week*



BLYTHE KING } HOW ABOUT A BOX, PEAR, AND A GRAPEFRUIT

