



2017

Poverty in the Greater Richmond Region, 2000-2015

John V. Moeser

University of Richmond, jmoeser@richmond.edu

Taylor Holden

University of Richmond, taylor.holden@richmond.edu

Evelyn Jeong

University of Richmond

Jacob Salamy

University of Richmond

Follow this and additional works at: <http://scholarship.richmond.edu/poverty>



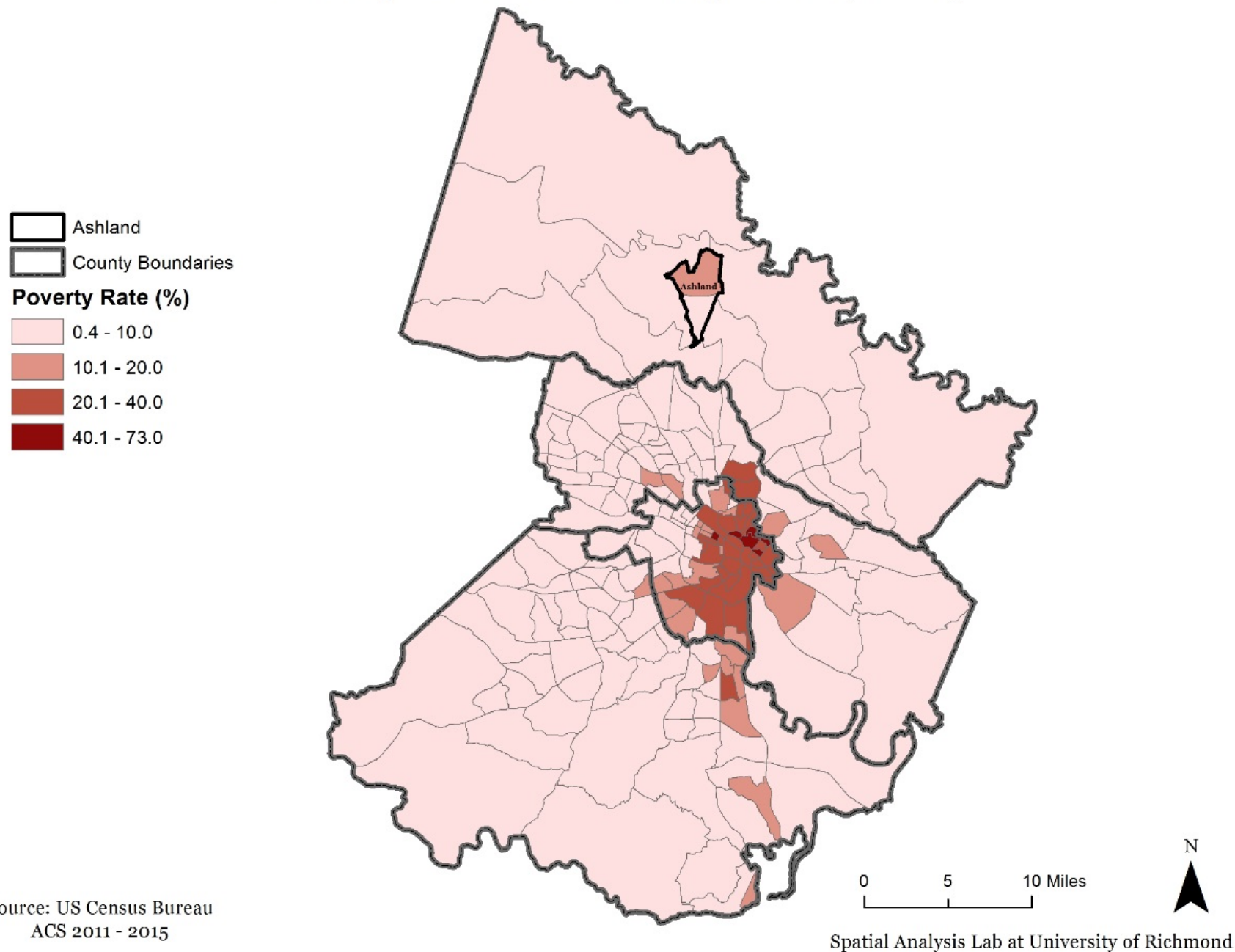
Part of the [Public Policy Commons](#), [Social Welfare Commons](#), and the [Urban Studies Commons](#)

Recommended Citation

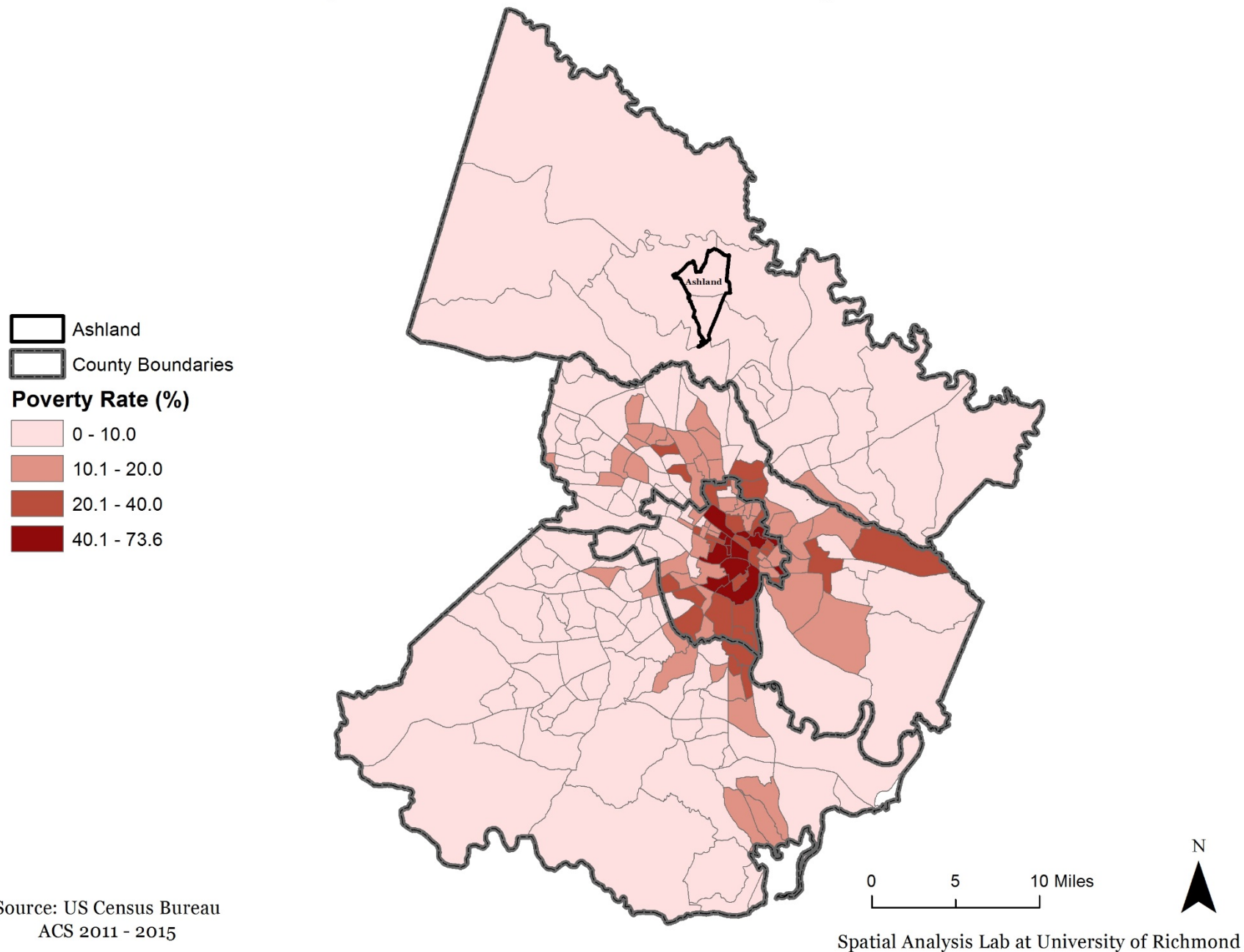
Moeser, John V., Taylor Holden, Evelyn Jeong, and Jacob Salamy. *Unpacking the Census: 2015 Updates*. Data Analysis and Reports. Richmond, Virginia: Bonner Center for Civic Engagement, University of Richmond, 2017.

This Data Analysis and Reports is brought to you for free and open access by the Bonner Center for Civic Engagement at UR Scholarship Repository. It has been accepted for inclusion in Poverty in Metropolitan Richmond by an authorized administrator of UR Scholarship Repository. For more information, please contact scholarshiprepository@richmond.edu.

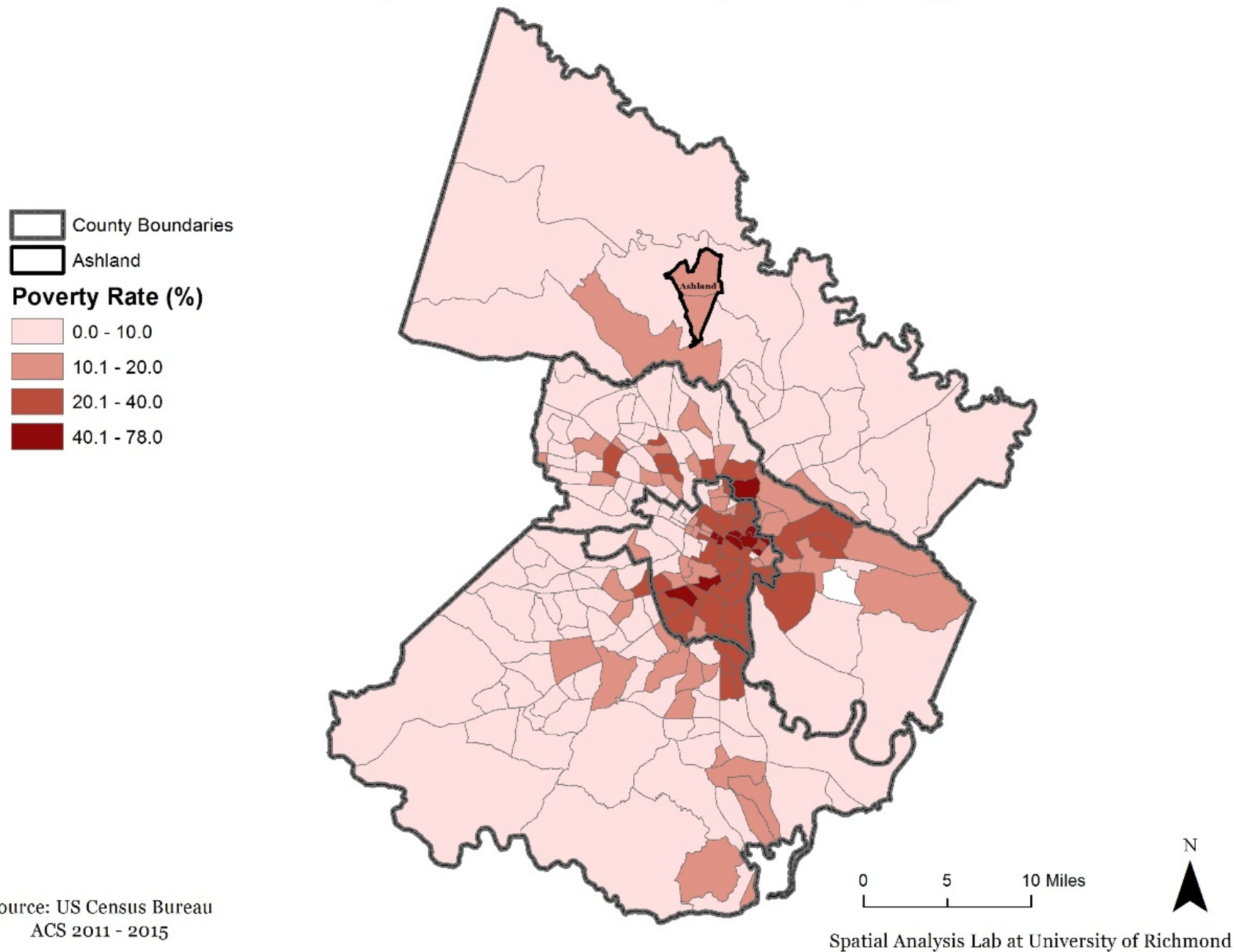
Poverty in the Greater Richmond Region (2000)



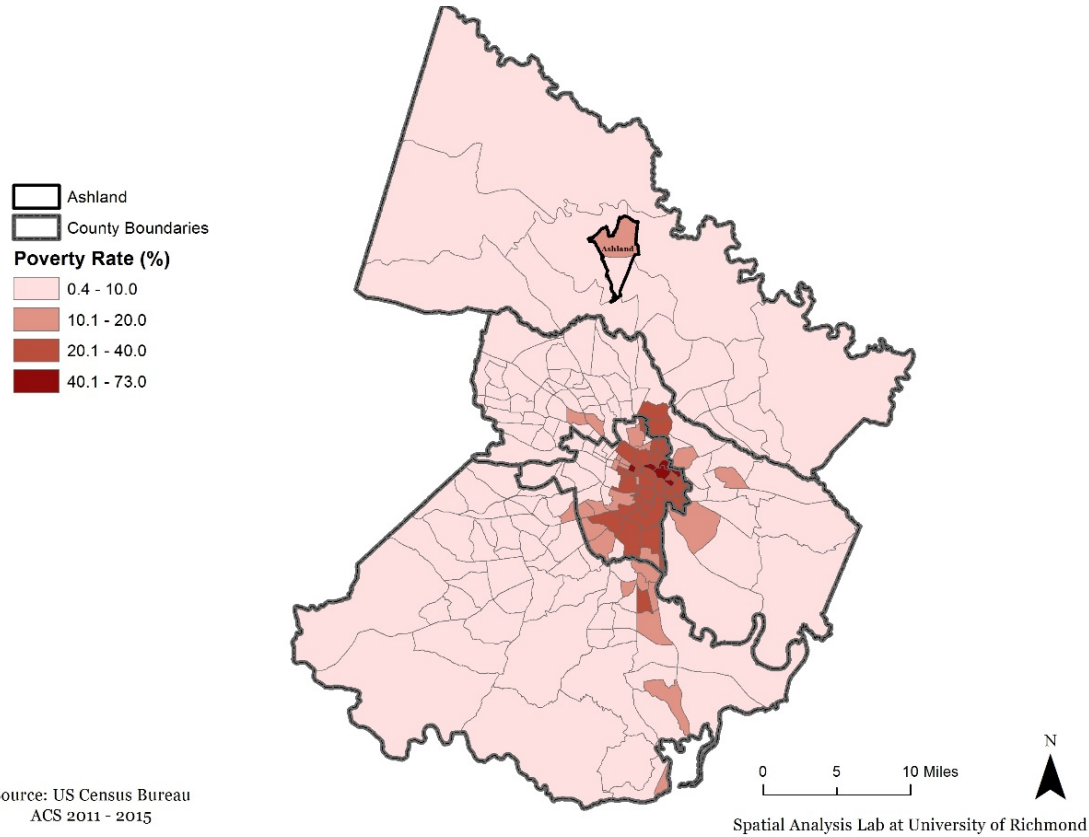
Poverty in Greater Richmond Region (2010)



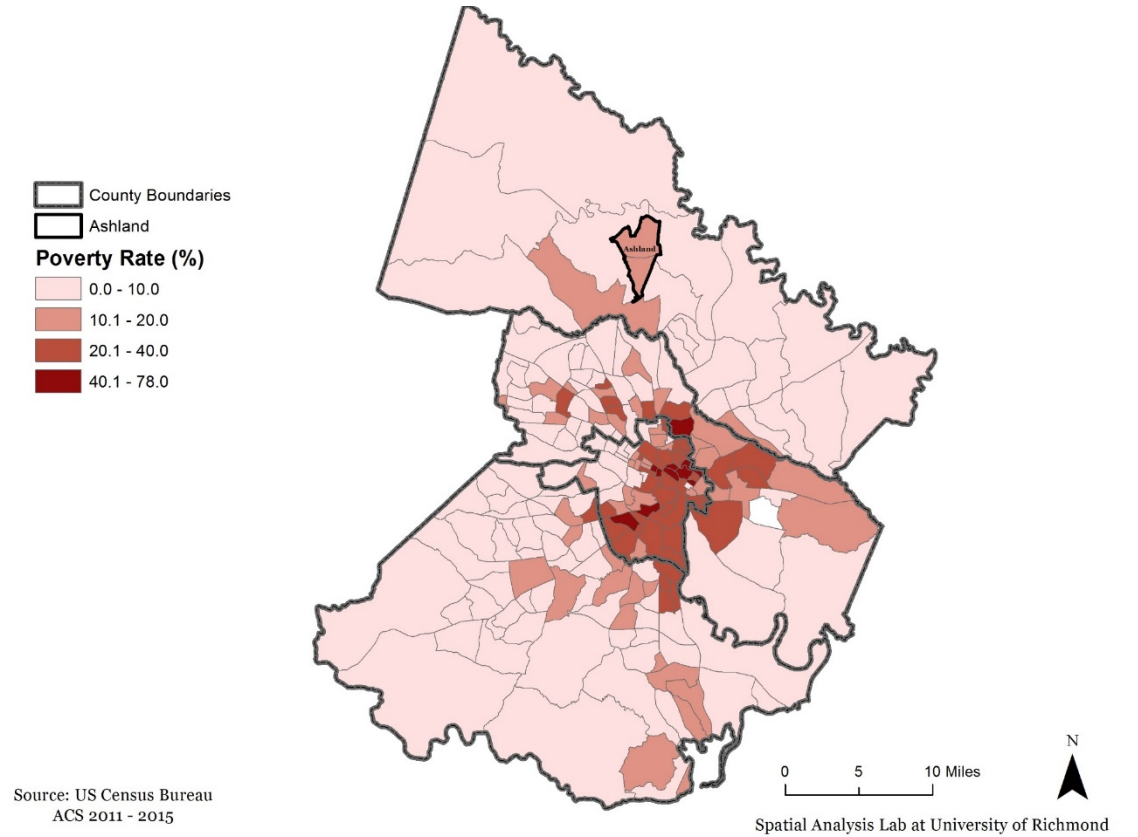
Poverty in the Greater Richmond Region (2015)



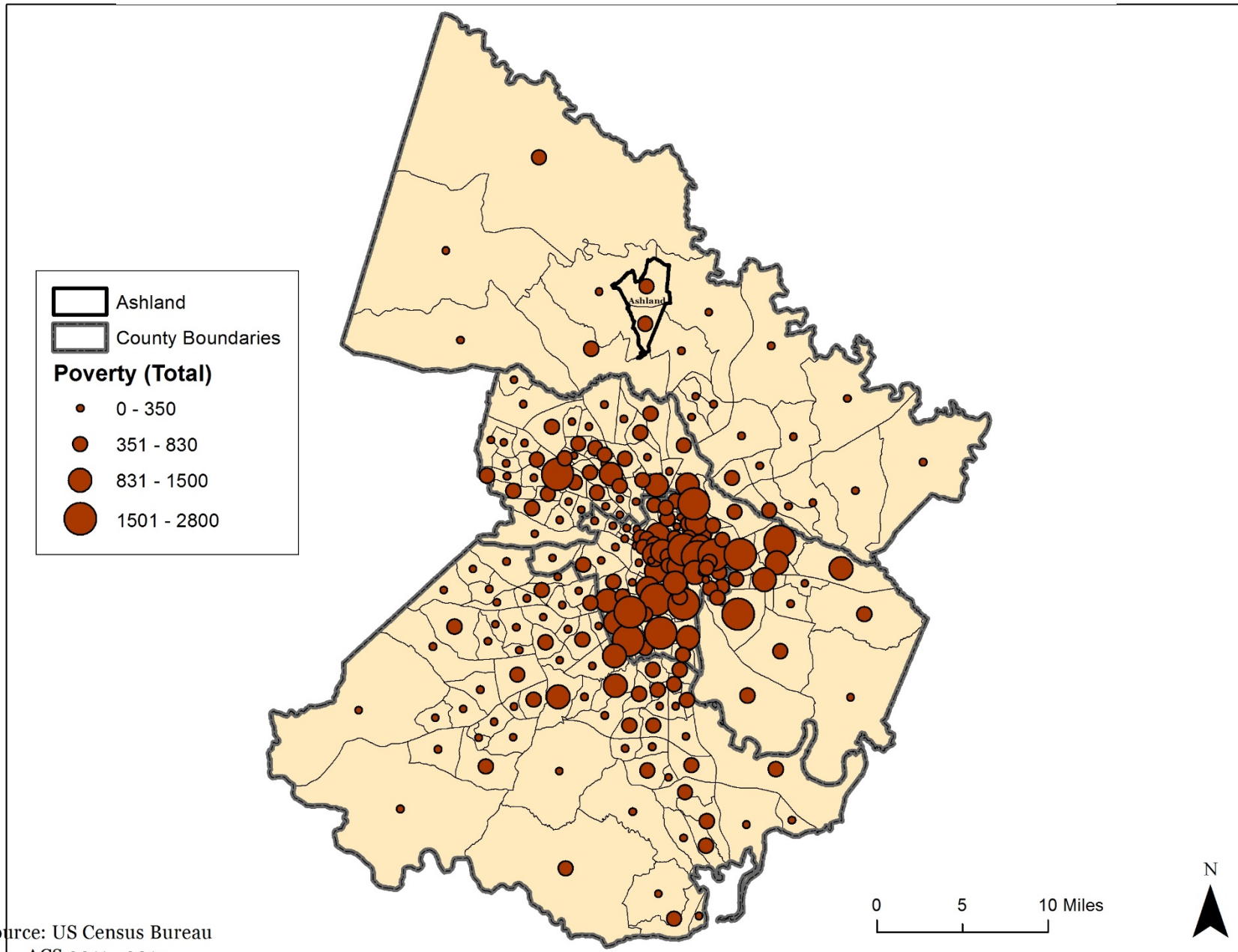
Poverty in the Greater Richmond Region (2000)



Poverty in the Greater Richmond Region (2015)



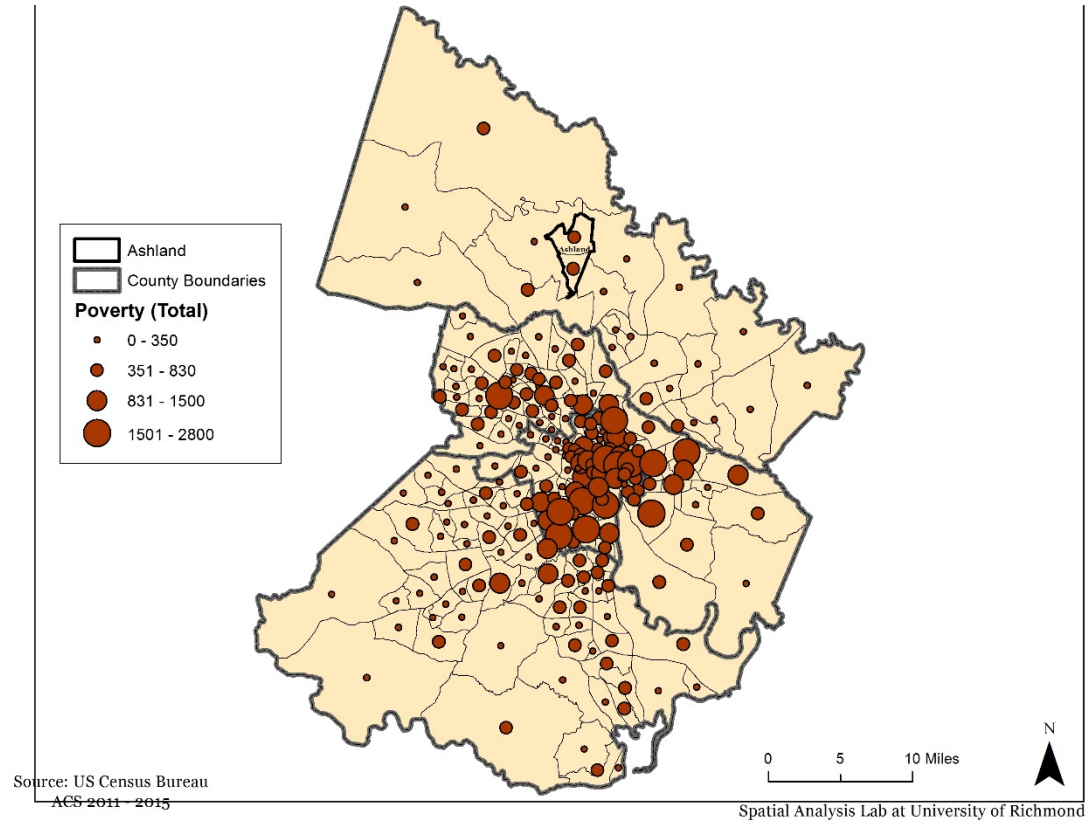
Poverty in the Greater Richmond Region (2015)



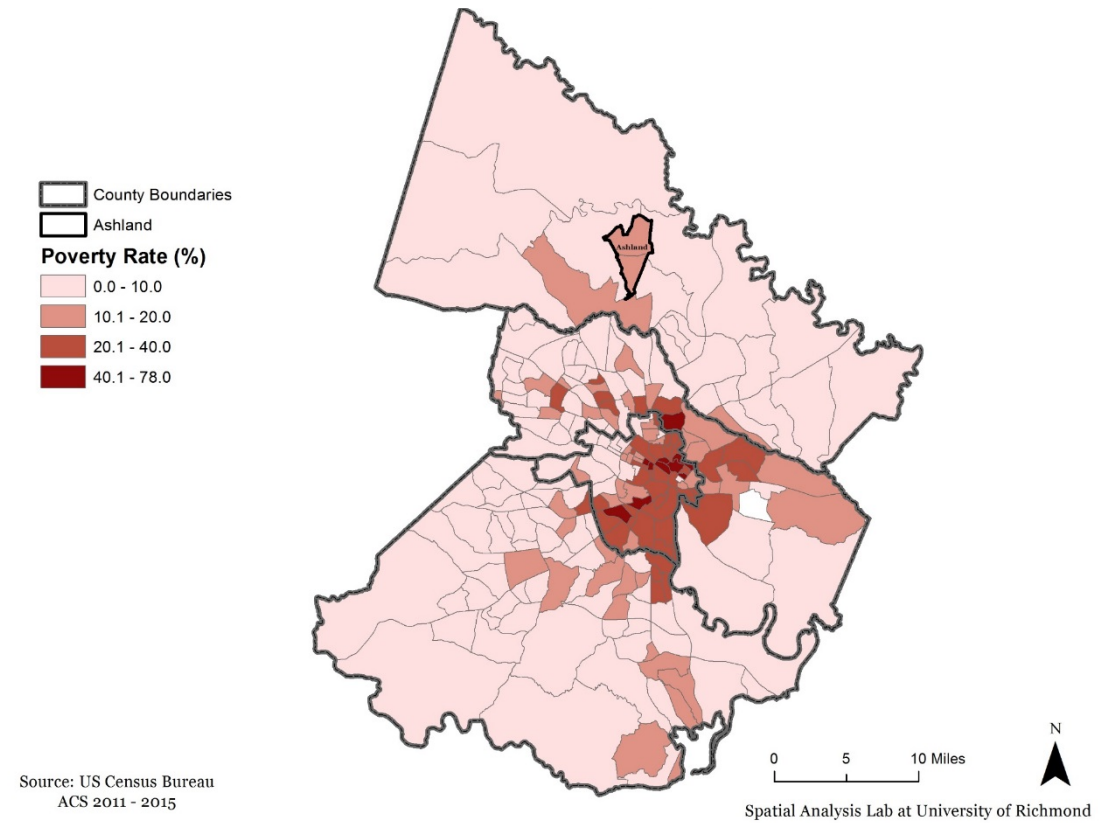
Source: US Census Bureau
ACS 2011 - 2015

Spatial Analysis Lab at University of Richmond

Poverty in the Greater Richmond Region (2015)



Poverty in the Greater Richmond Region (2015)

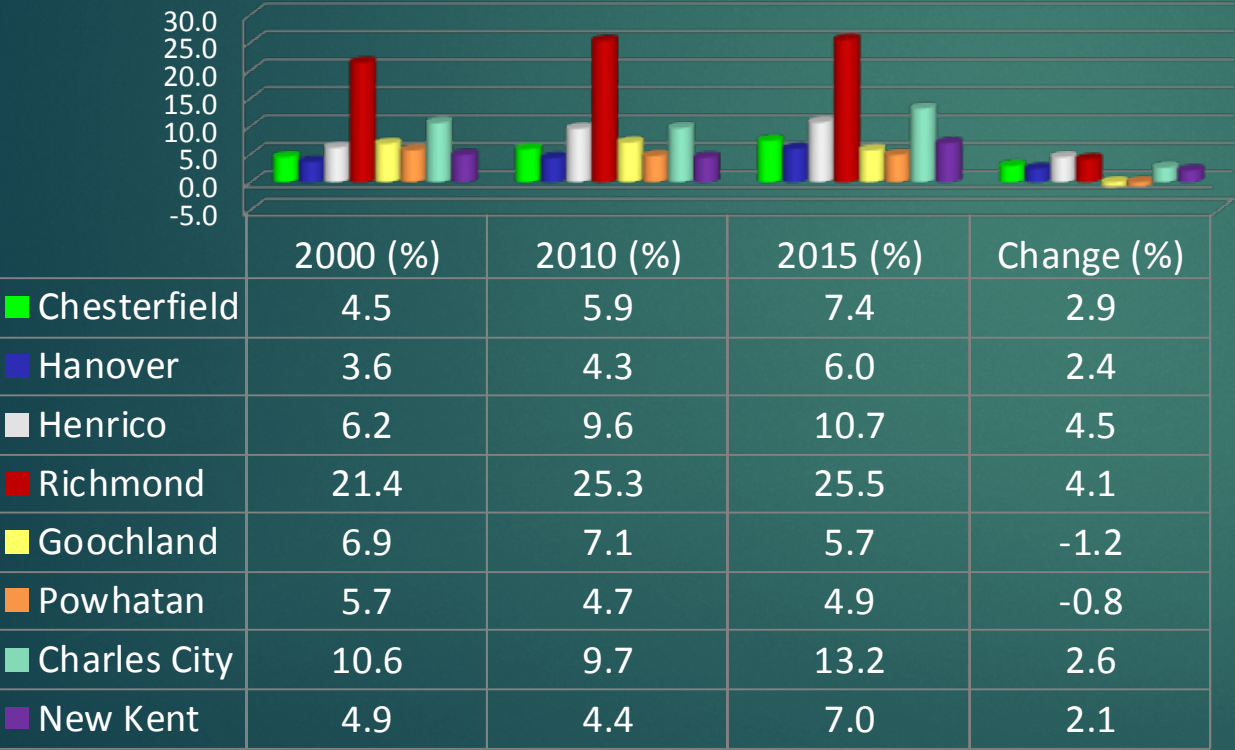


Population Living in Poverty (2000-2015)

(Census and American Community Survey 5-Year Estimates)

Richmond Regional Planning District Poverty Rate = 11.88%

Change in Poverty Rate



Change in Total Population Living in Poverty

