



2015

Median Household Income in Chesterfield County, Virginia

John V. Moeser

University of Richmond, jmoeser@richmond.edu

Follow this and additional works at: <http://scholarship.richmond.edu/poverty>



Part of the [Public Policy Commons](#), [Social Welfare Commons](#), and the [Urban Studies Commons](#)

Recommended Citation

Moeser, John V. *Median Household Income in Chesterfield County, Virginia*. Data Analysis and Reports. Richmond, Virginia: Bonner Center for Civic Engagement, University of Richmond, 2015.

This Data Analysis and Reports is brought to you for free and open access by the Bonner Center for Civic Engagement at UR Scholarship Repository. It has been accepted for inclusion in Poverty in Metropolitan Richmond by an authorized administrator of UR Scholarship Repository. For more information, please contact scholarshiprepository@richmond.edu.

Median Household Income in Chesterfield County

DR. JOHN V. MOESER

SENIOR FELLOW, BONNER CENTER FOR CIVIC ENGAGEMENT

UNIV. OF RICHMOND

PROFESSOR EMERITUS OF URBAN STUDIES AND PLANNING, VCU

MR. T. DILLON MASSEY

BONNER SCHOLAR & RESEARCH COORDINATOR

BONNER CENTER FOR CIVIC ENGAGEMENT

UNIV. OF RICHMOND



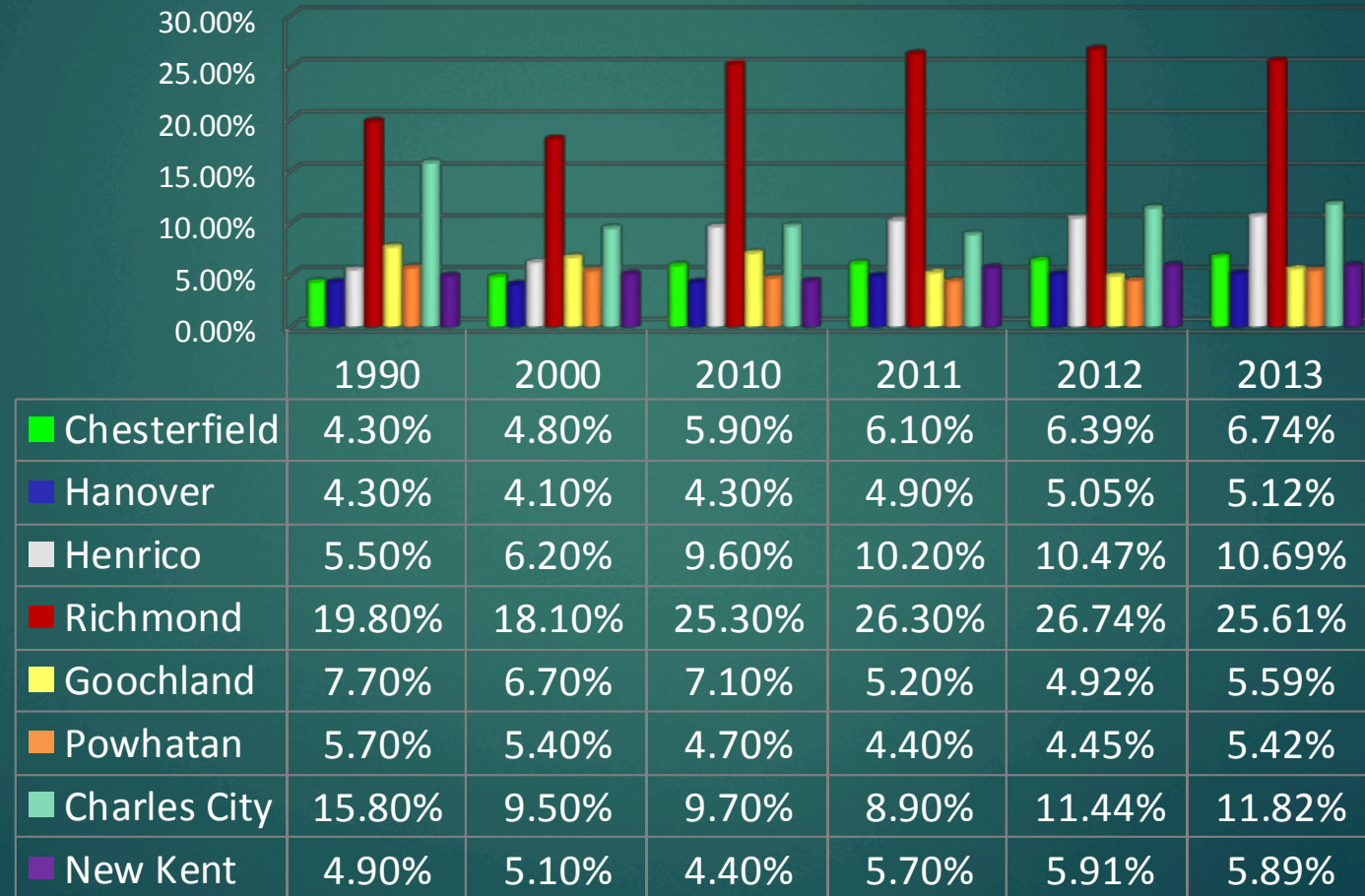
2013 Poverty Thresholds

- ▶ Poverty threshold for a 4-person family: \$23,834
- ▶ Poverty threshold for one person:
 - ▶ Under age 65: \$12,119
 - ▶ 65 years and over: \$11,173

Percent of Population Living in Poverty

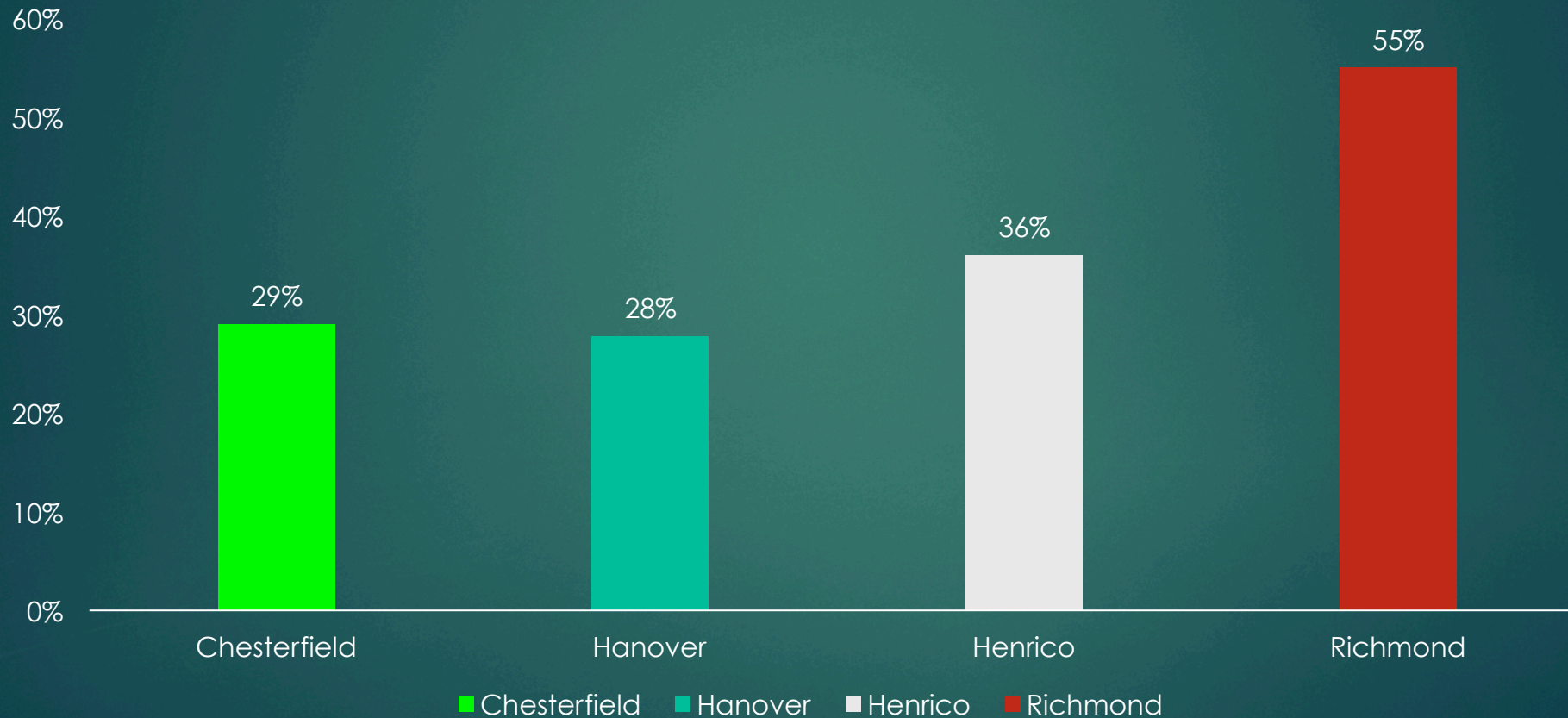
(2009-2013 American Community Survey 5-Year Estimates)

Richmond Regional Planning District Poverty Rate = 11.55%



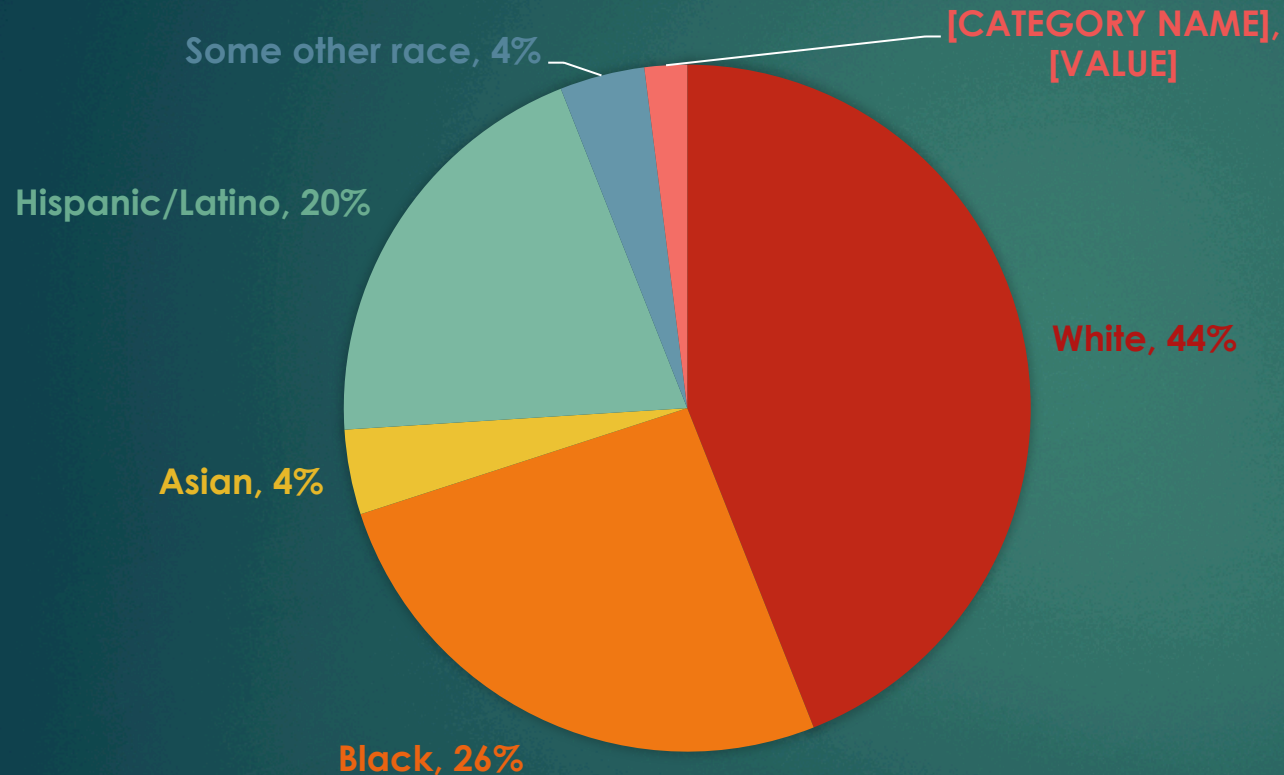
Percent of Families of 4 with Income of \$45,000 or less

Annual Income Eligibility for Free and Reduced Fare Lunch = \$44,123



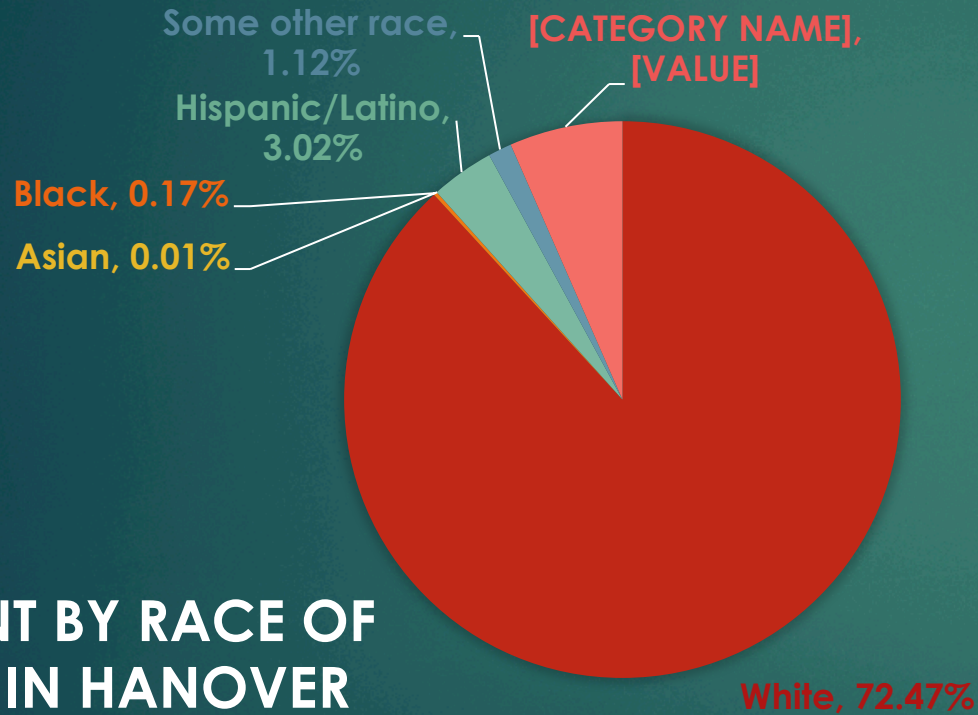
Poverty in Chesterfield

PERCENT BY RACE OF POOR IN CHESTERFIELD



Of all whites, **5.0%** are in poverty
Of all blacks, **9.0%** are in poverty
Of all Asians, **7.0%** are in poverty
Of all Latinos, **19.0%** are in poverty
All of some other race, **15.0%** are in poverty
All of two or more races, **6.0%** are in poverty

Poverty in Hanover

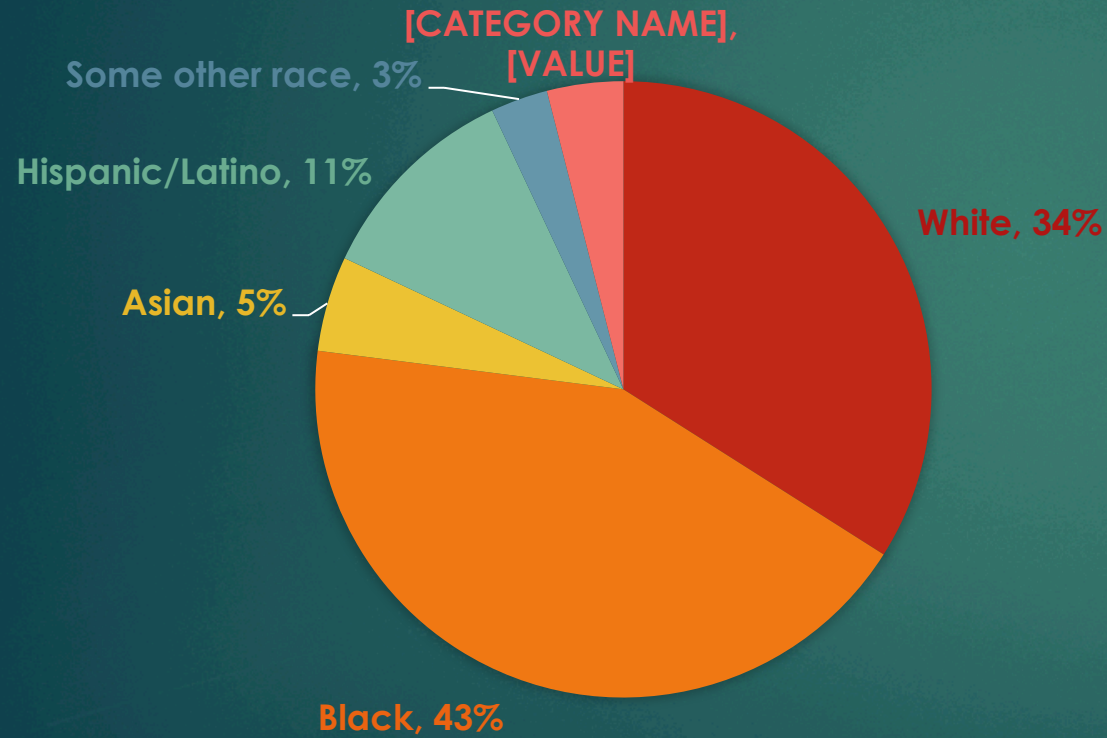


PERCENT BY RACE OF
POOR IN HANOVER

Of all whites, **4.4%** are in poverty
Of all blacks, **10.3%** are in poverty
Of all Asians, **2.7%** are in poverty
Of all Latinos, **7.2%** are in poverty
All of some other race, **7.6%** are in poverty
All of two or more races, **16.0%** are in poverty

Poverty in Henrico

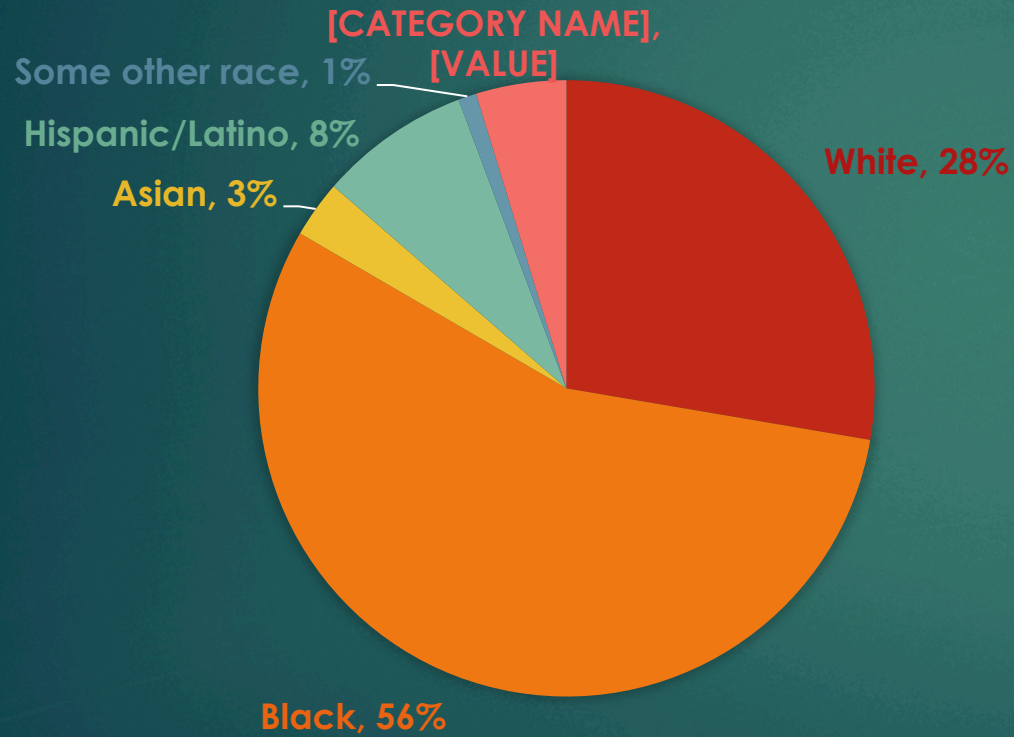
PERCENT BY RACE OF POOR IN HENRICO



Of all whites, **7.0%** are in poverty
Of all blacks, **16.0%** are in poverty
Of all Asians, **9.0%** are in poverty
Of all Latinos, **24.0%** are in poverty
All of some other race, **24.0%** are in poverty
All of two or more races, **18.0%** are in poverty

Poverty in Richmond

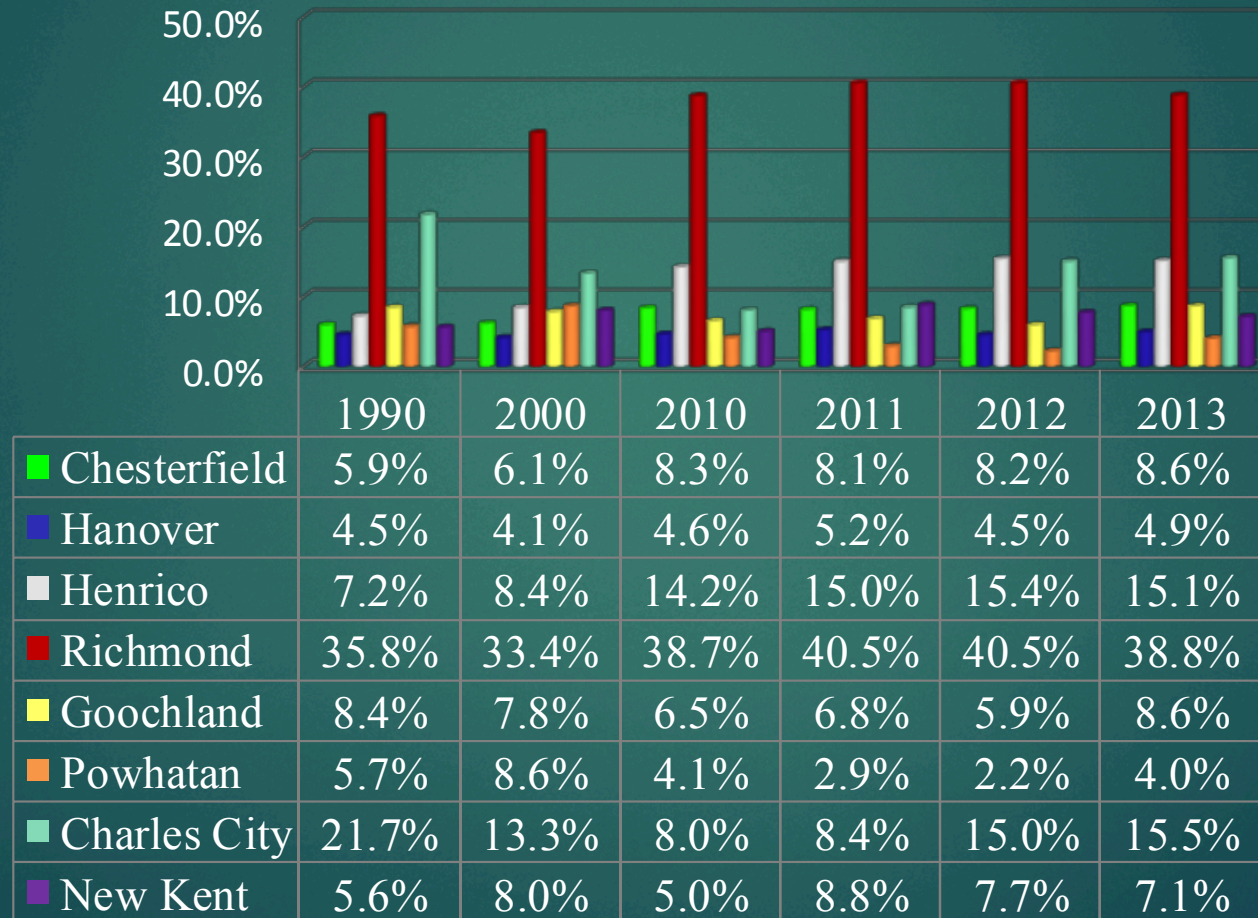
PERCENT BY RACE OF POOR IN RICHMOND



Of all whites, **17.8%** are in poverty
Of all blacks, **30.9%** are in poverty
Of all Asians, **41.6%** are in poverty
Of all Latinos, **35.4%** are in poverty
All of some other race, **19.0%** are in poverty
All of two or more races, **38.0%** are in poverty

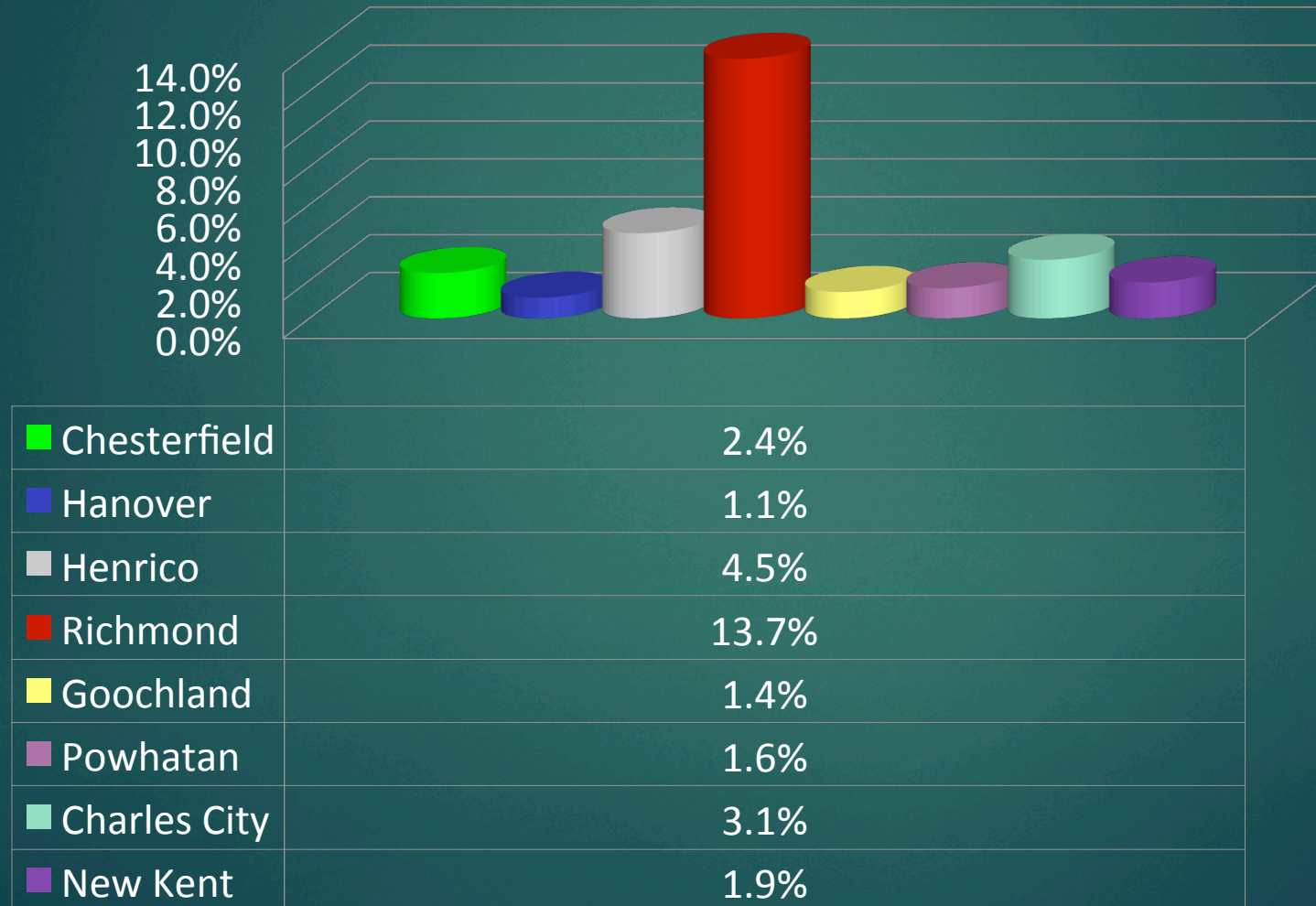
Children Under 18 Living in Poverty

(2009-2013 American Community Survey 5-Year Estimates)



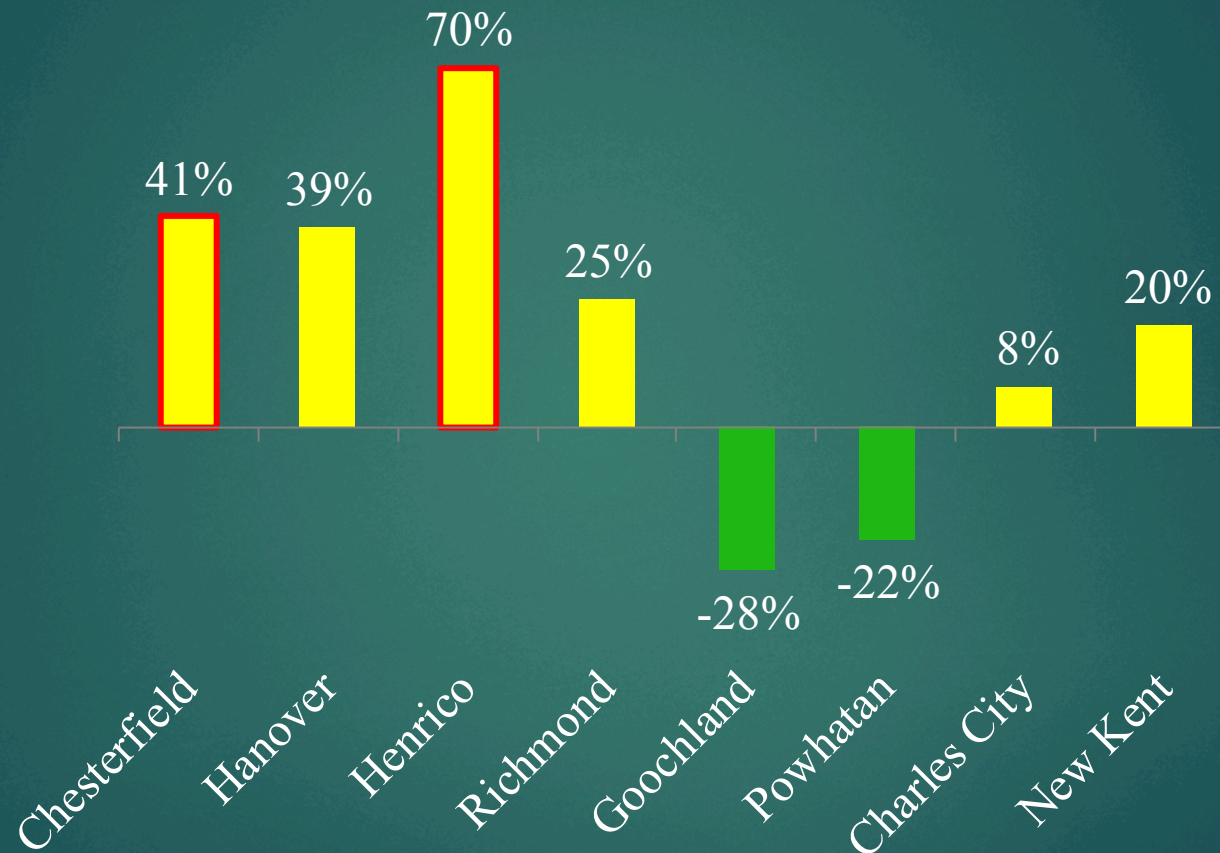
Percent of Female Householders with Children Under 18 Living in Poverty

(2009-2013 American Community Survey 5-Year Estimates)



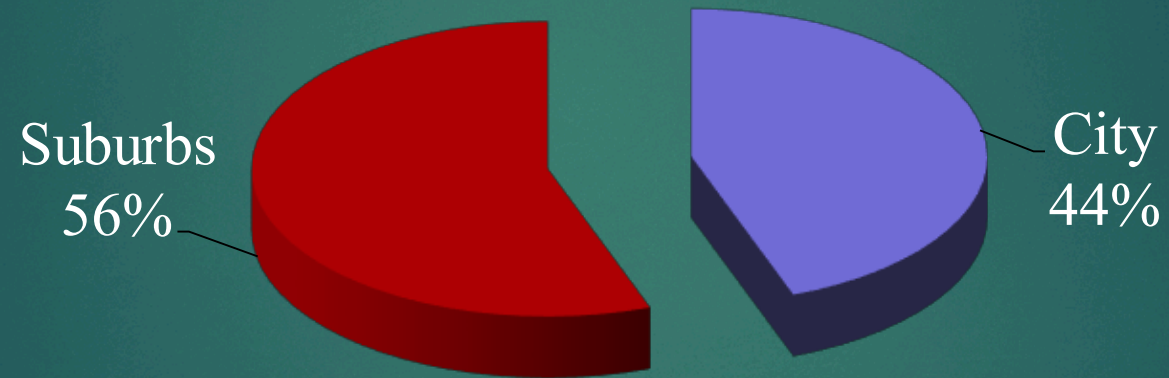
Poverty Growth/Decline: 2000-2013

(2009-2013 American Community Survey 5-Year Estimates)



Numbers of People in Poverty

(2009-2013 American Community Survey 5-Year Estimates)



Disparity Between Poorest and Wealthiest Census Tracts Based on Median Household Income

(2009-2013 American Community Survey 5-Year Estimates)

Ratio of Census Tract with Highest Household
Income to Lowest

Charles City:	1.10-----1
Chesterfield:	6.06-----1
Goochland:	1.82-----1
Hanover:	3.30-----1
Henrico:	8.64-----1
New Kent:	1.06-----1
Powhatan:	1.28-----1
Richmond:	19.23-----1

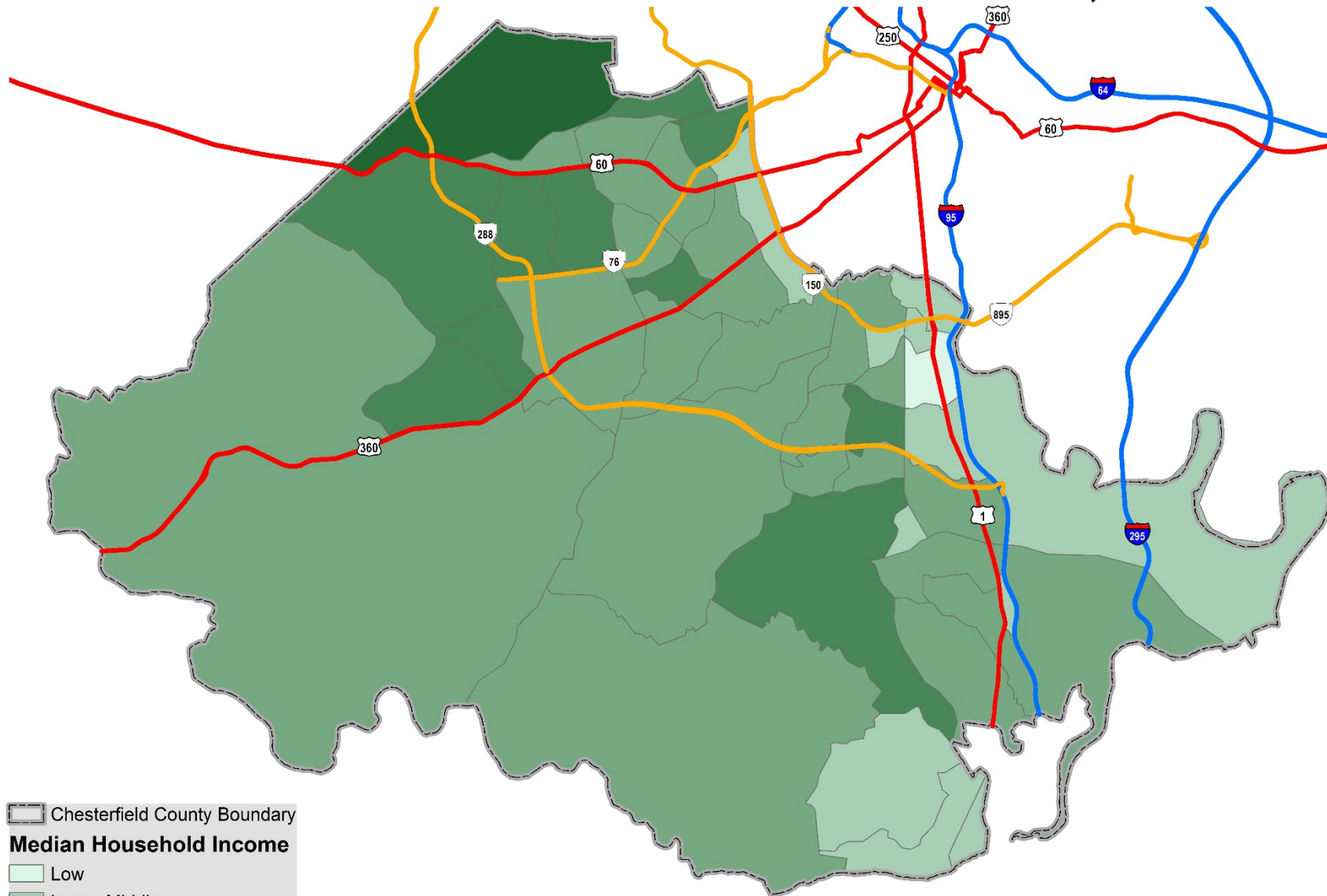
Single wealthiest tract = \$197,308 (Richmond)

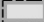
Single poorest tract = \$10,263 (Richmond)

Ratio: 19.23-----1

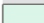
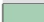
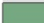




Chesterfield Median Household Income, 1990



 Chesterfield County Boundary

Median Household Income

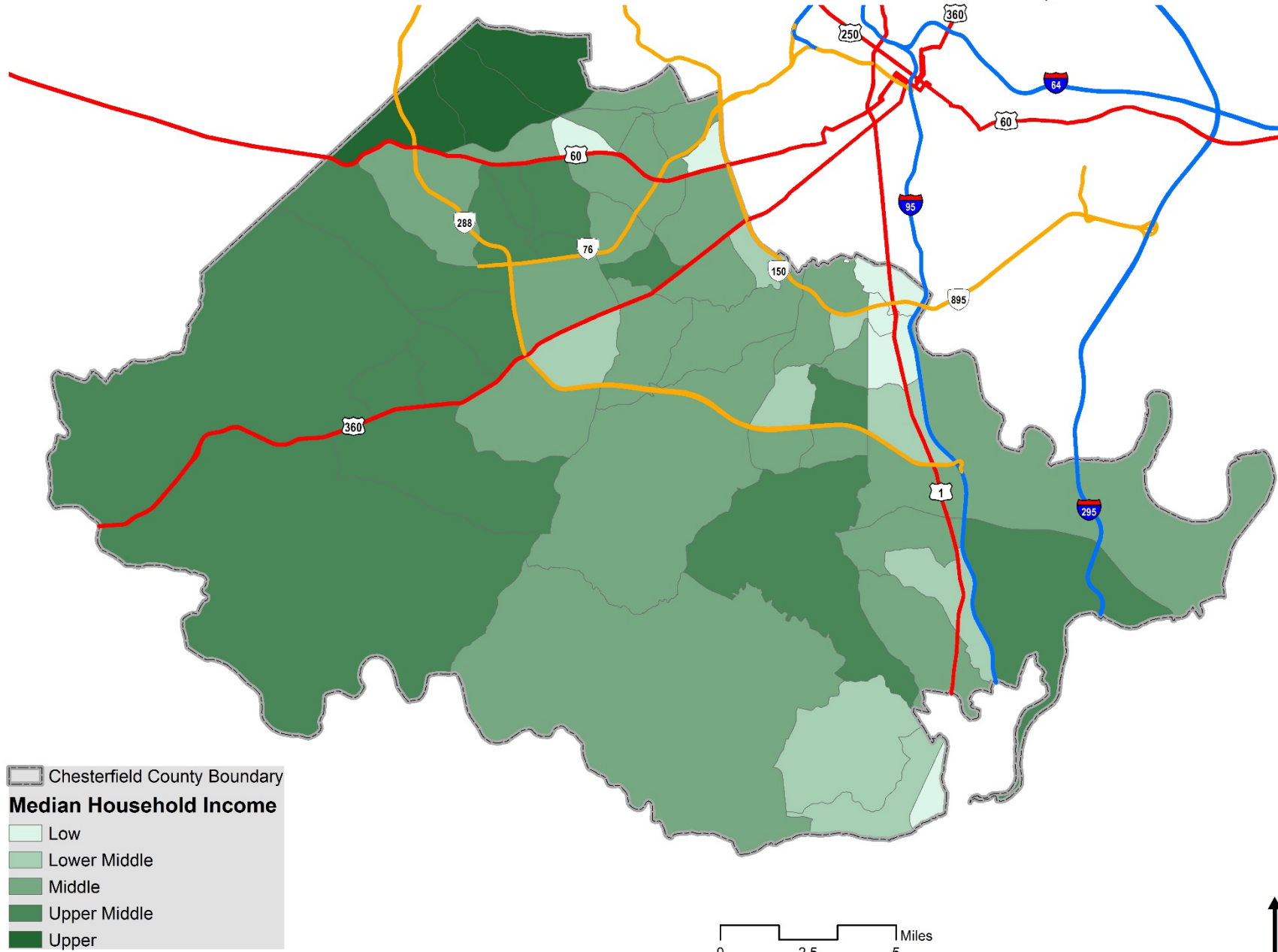
-  Low
-  Lower Middle
-  Middle
-  Upper Middle
-  Upper

Source: US Census Bureau, 1990

0 2.5 5 Miles

T. Dillon Massey 

Chesterfield Median Household Income, 2000



▭ Chesterfield County Boundary

Median Household Income

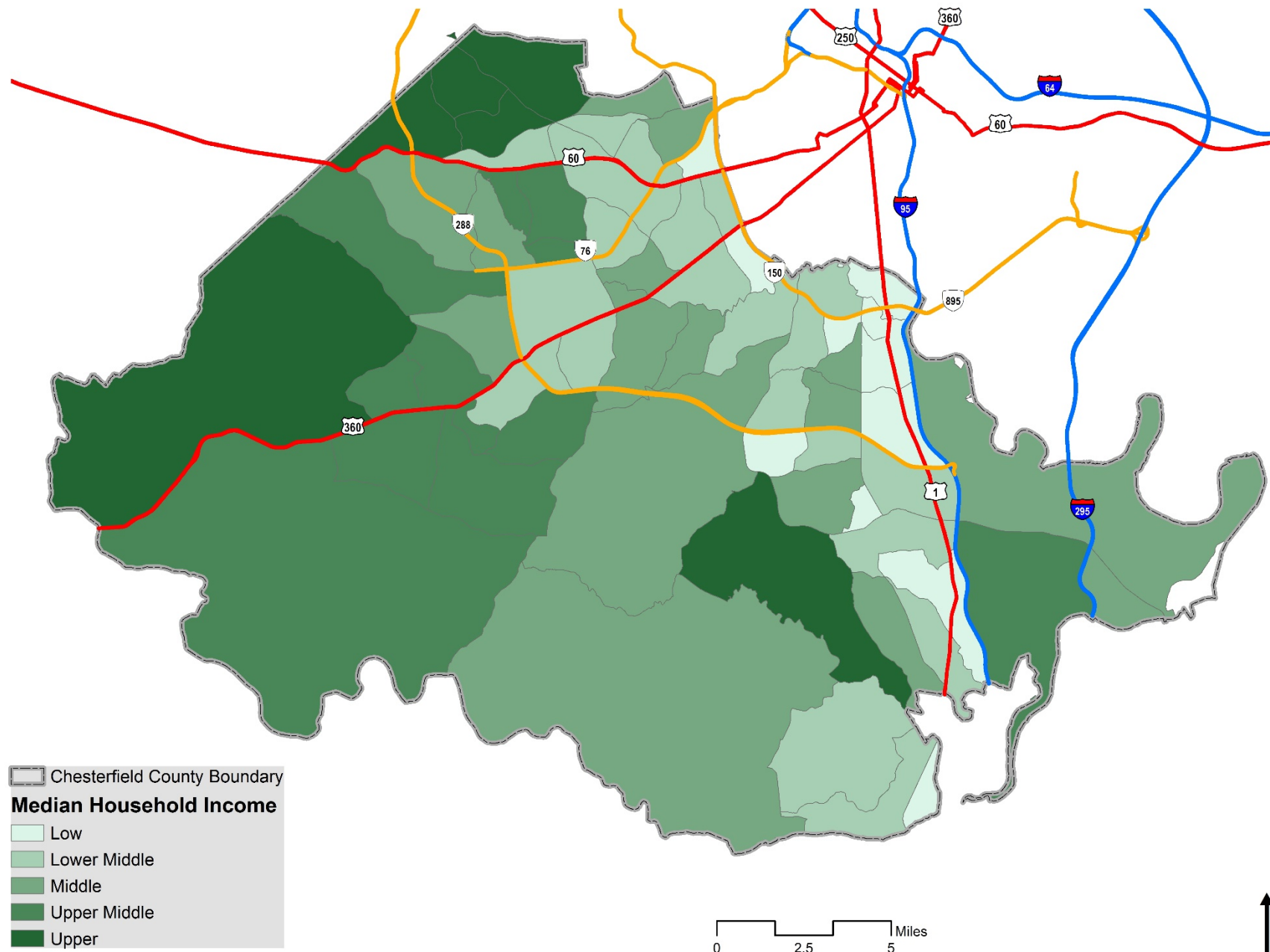
- Low
- Lower Middle
- Middle
- Upper Middle
- Upper

Source: US Census Bureau, 2000

0 2.5 5 Miles

T. Dillon Massey 

Chesterfield Median Household Income, 2010



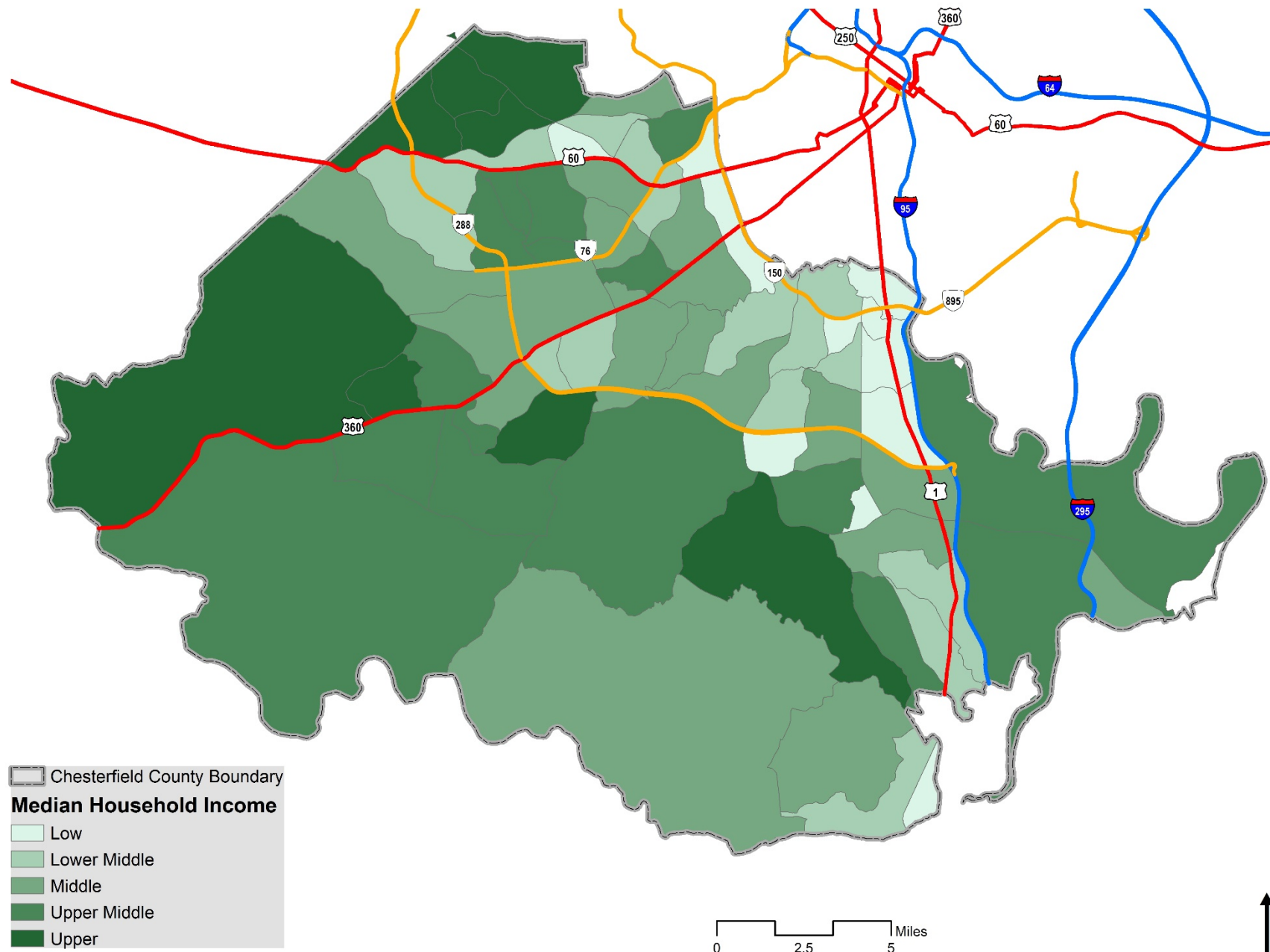
▭ Chesterfield County Boundary
Median Household Income
□ Low
□ Lower Middle
□ Middle
□ Upper Middle
□ Upper

Source: US Census Bureau
ACS 2006-2010

0 2.5 5 Miles

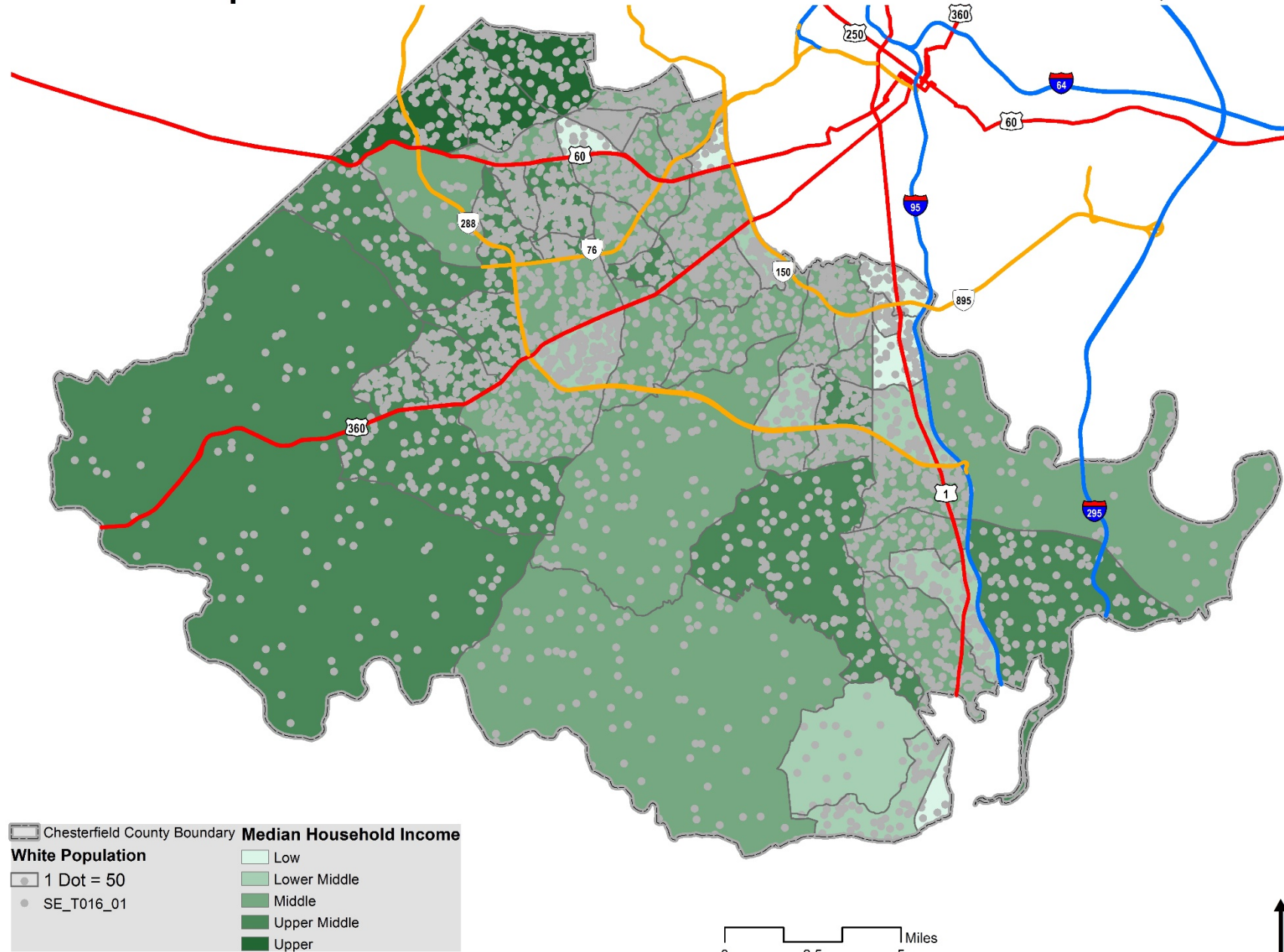
T. Dillon Massey

Chesterfield Median Household Income, 2013



T. Dillon Massey

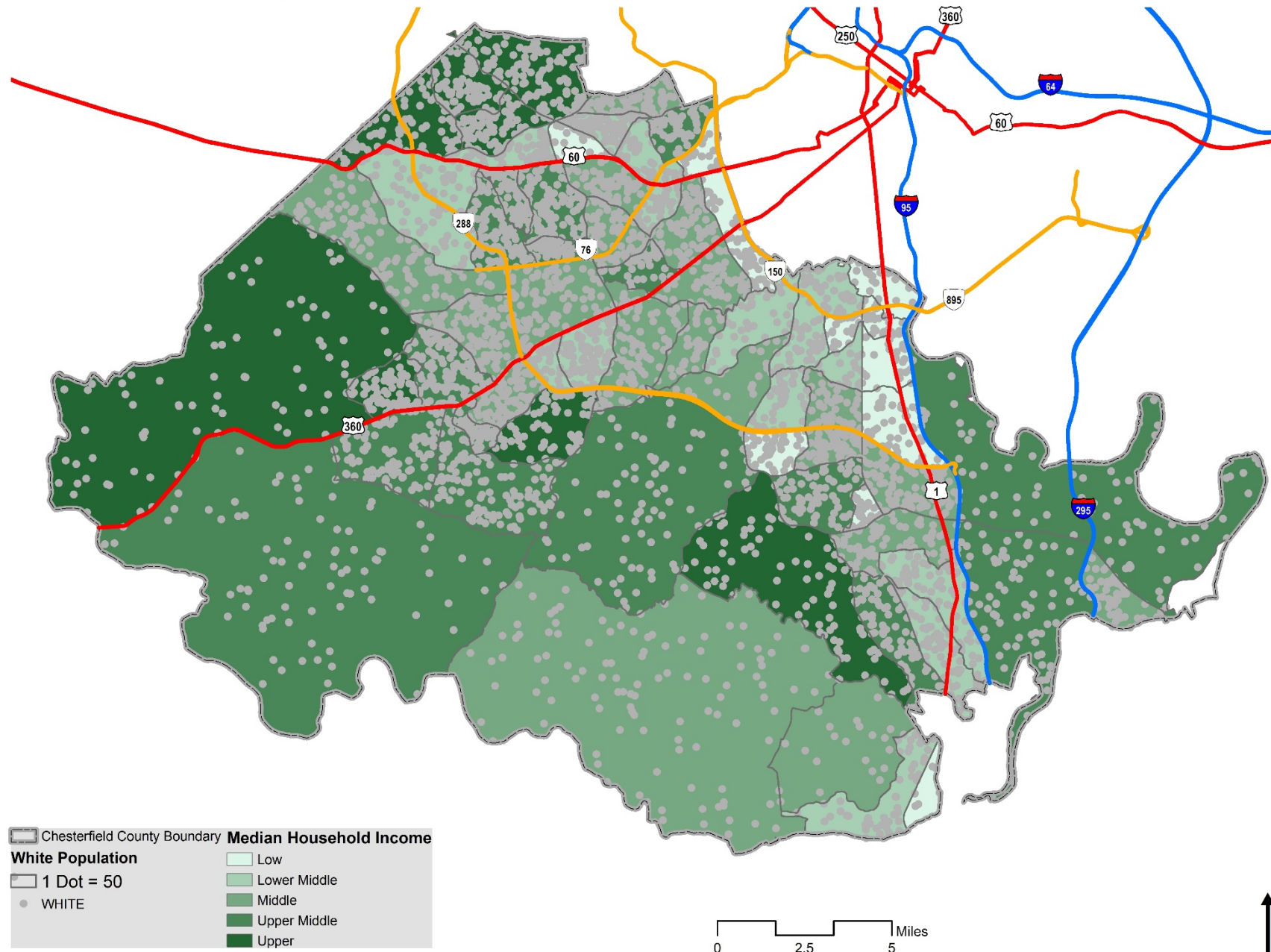
White Population and Median Household Income, 2000



Source: US Census Bureau, 2000

T. Dillon Massey

White Population and Median Household Income, 2013

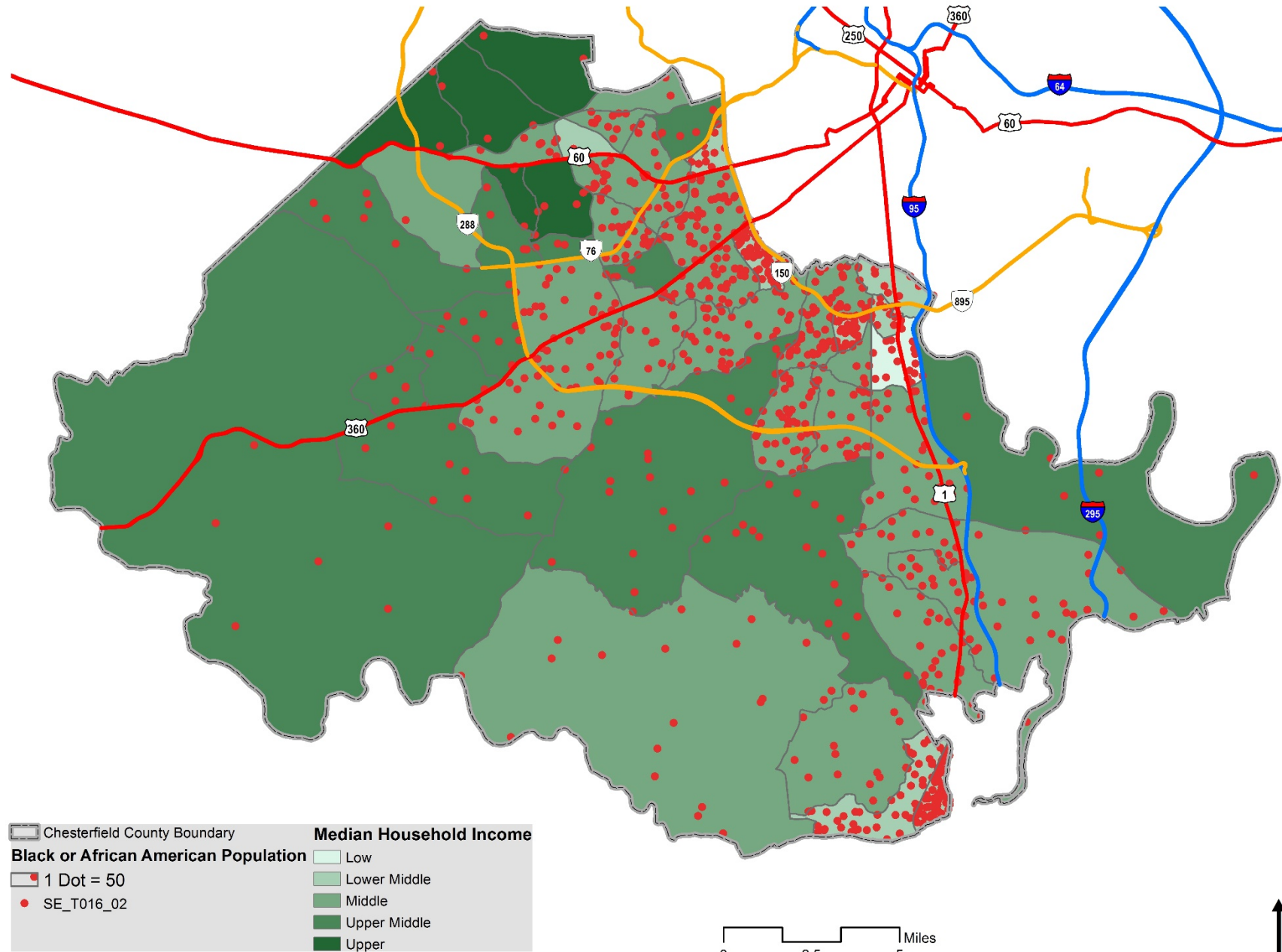


Source: US Census Bureau
ACS 2009-2013

0 2.5 5 Miles

T. Dillon Massey

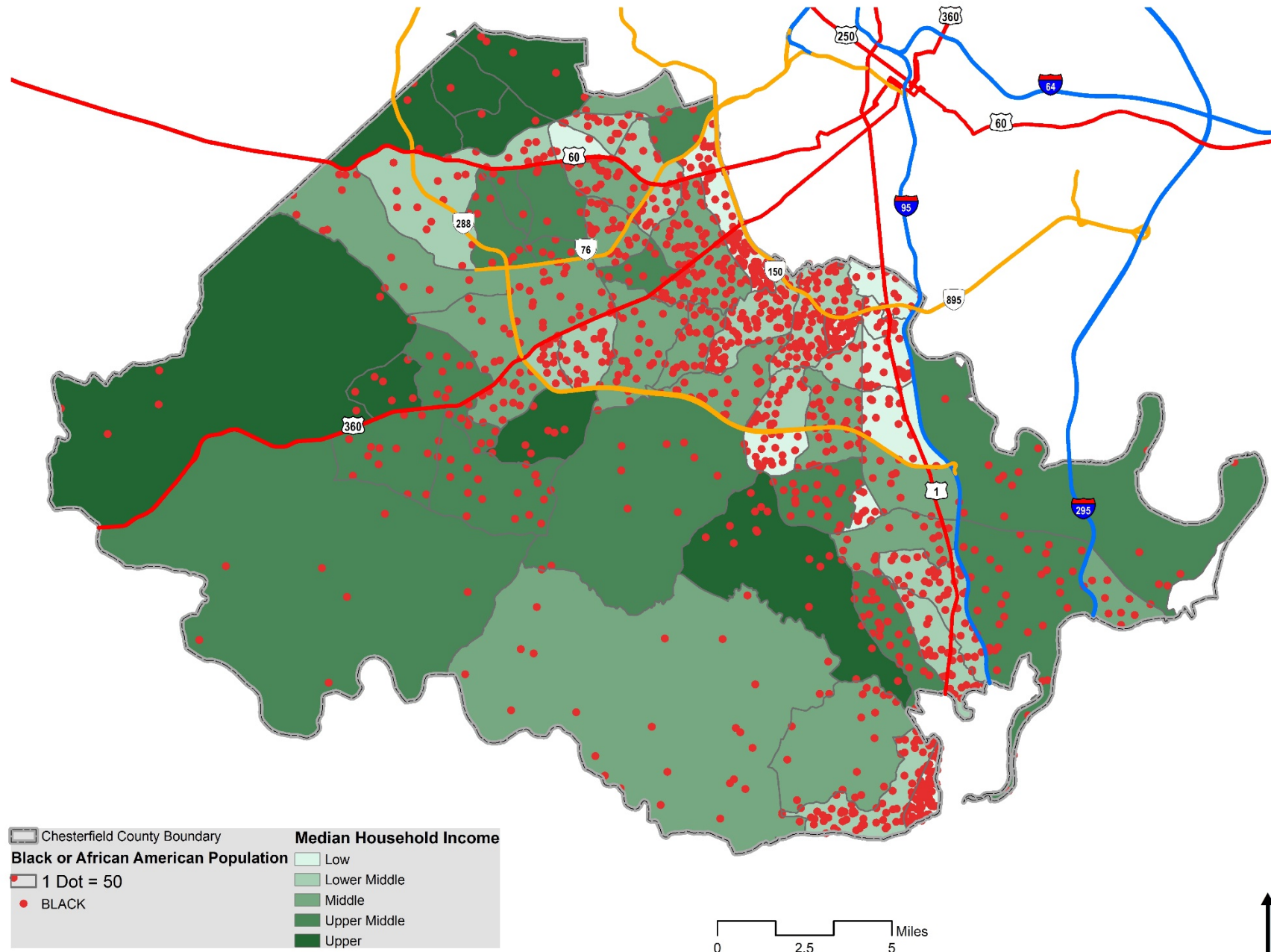
Black or African American Population and Median Household Income, 2000



Source: US Census Bureau, 2000

T. Dillon Massey

Black or African American Population and Median Household Income, 2013

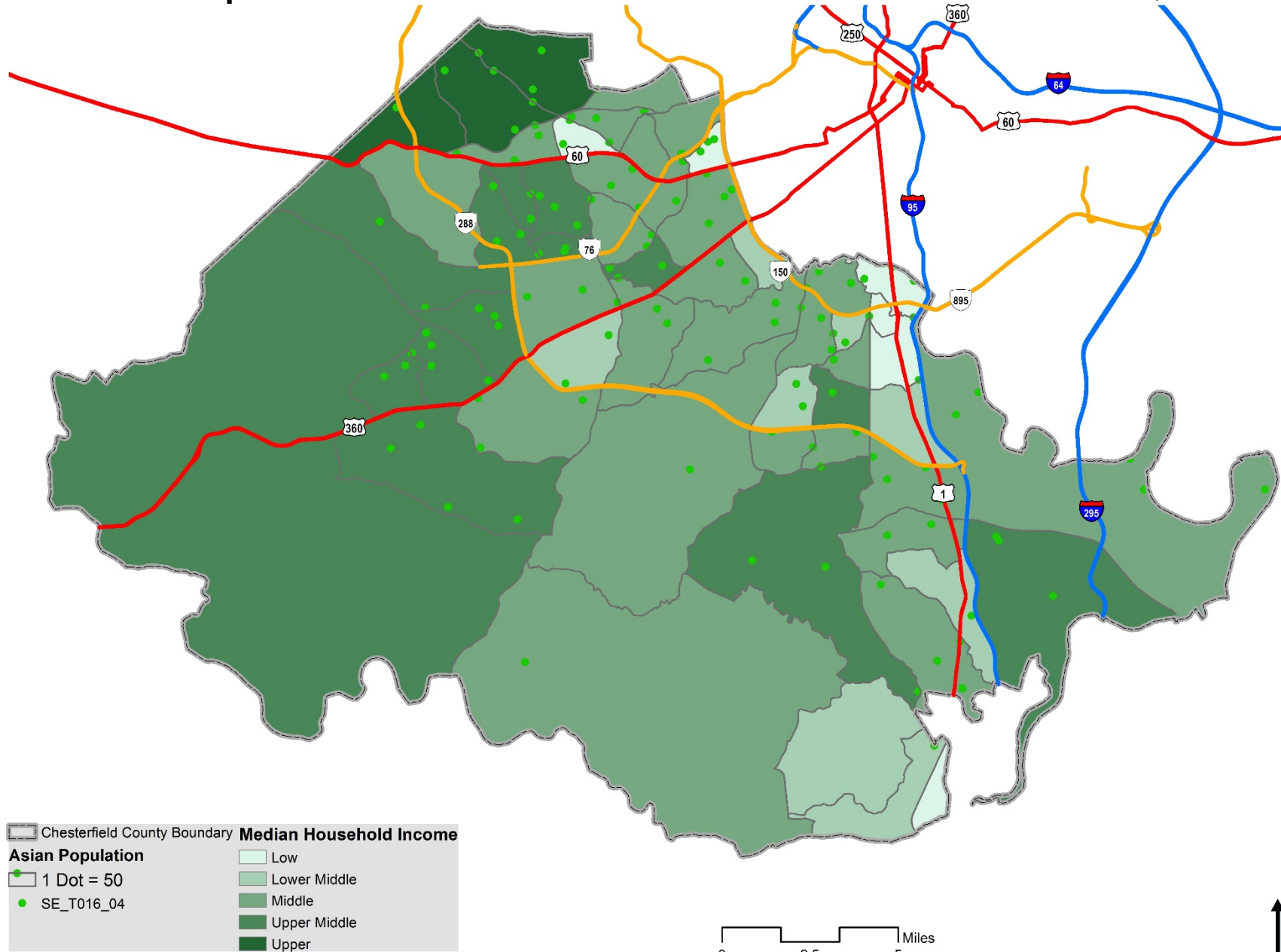


Source: US Census Bureau
ACS 2009-2013

0 2.5 5 Miles

T. Dillon Massey

Asian Population and Median Household Income, 2000



Chesterfield County Boundary

Asian Population

- 1 Dot = 50
- SE_T016_04

Median Household Income

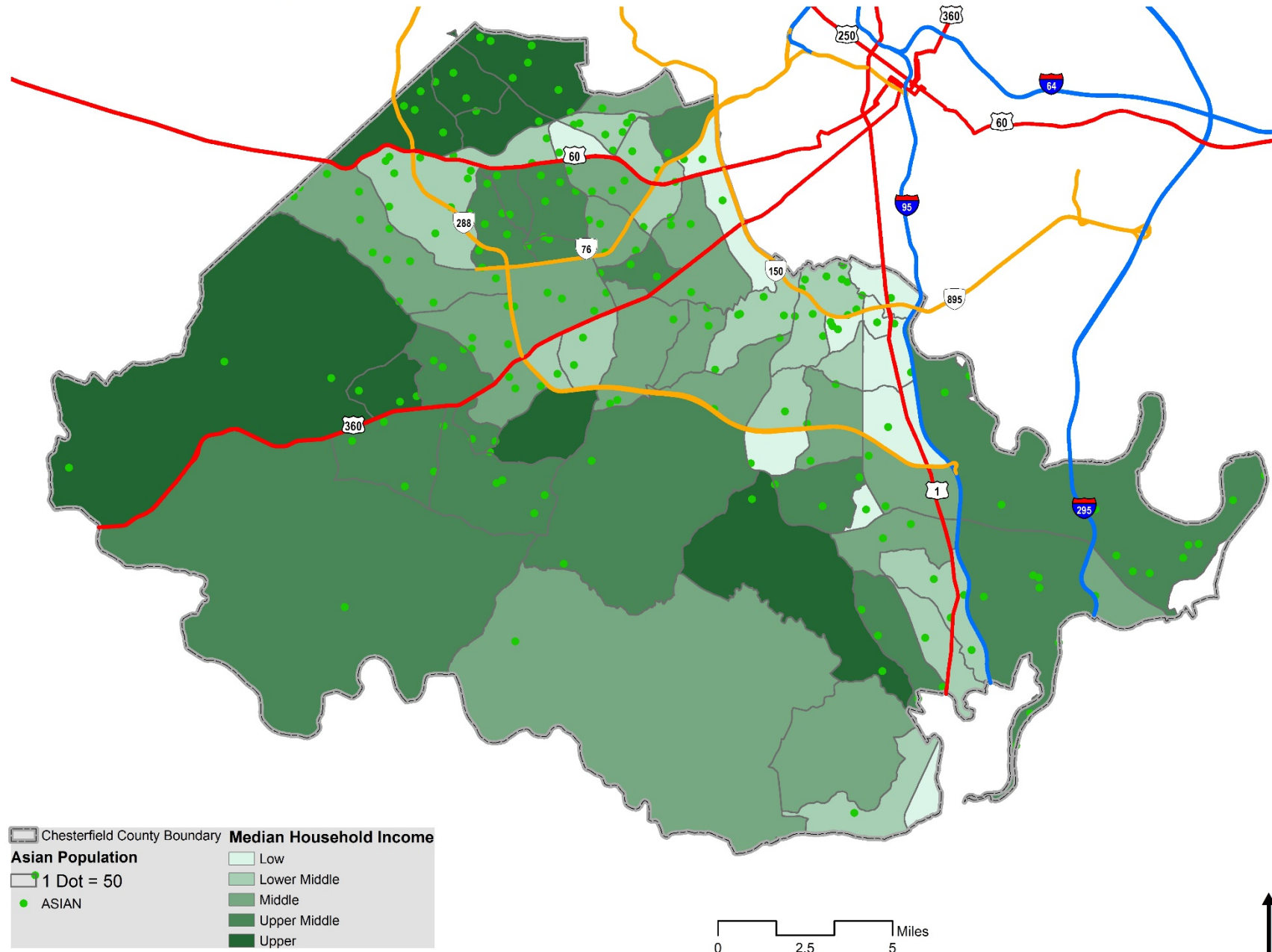
- Low
- Lower Middle
- Middle
- Upper Middle
- Upper


Source: US Census Bureau, 2000

0 2.5 5 Miles


T. Dillon Massey


Asian Population and Median Household Income, 2013



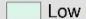
 Chesterfield County Boundary

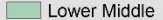
Asian Population

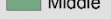
 1 Dot = 50

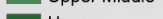
 ASIAN


Median Household Income

 Low

 Lower Middle

 Middle

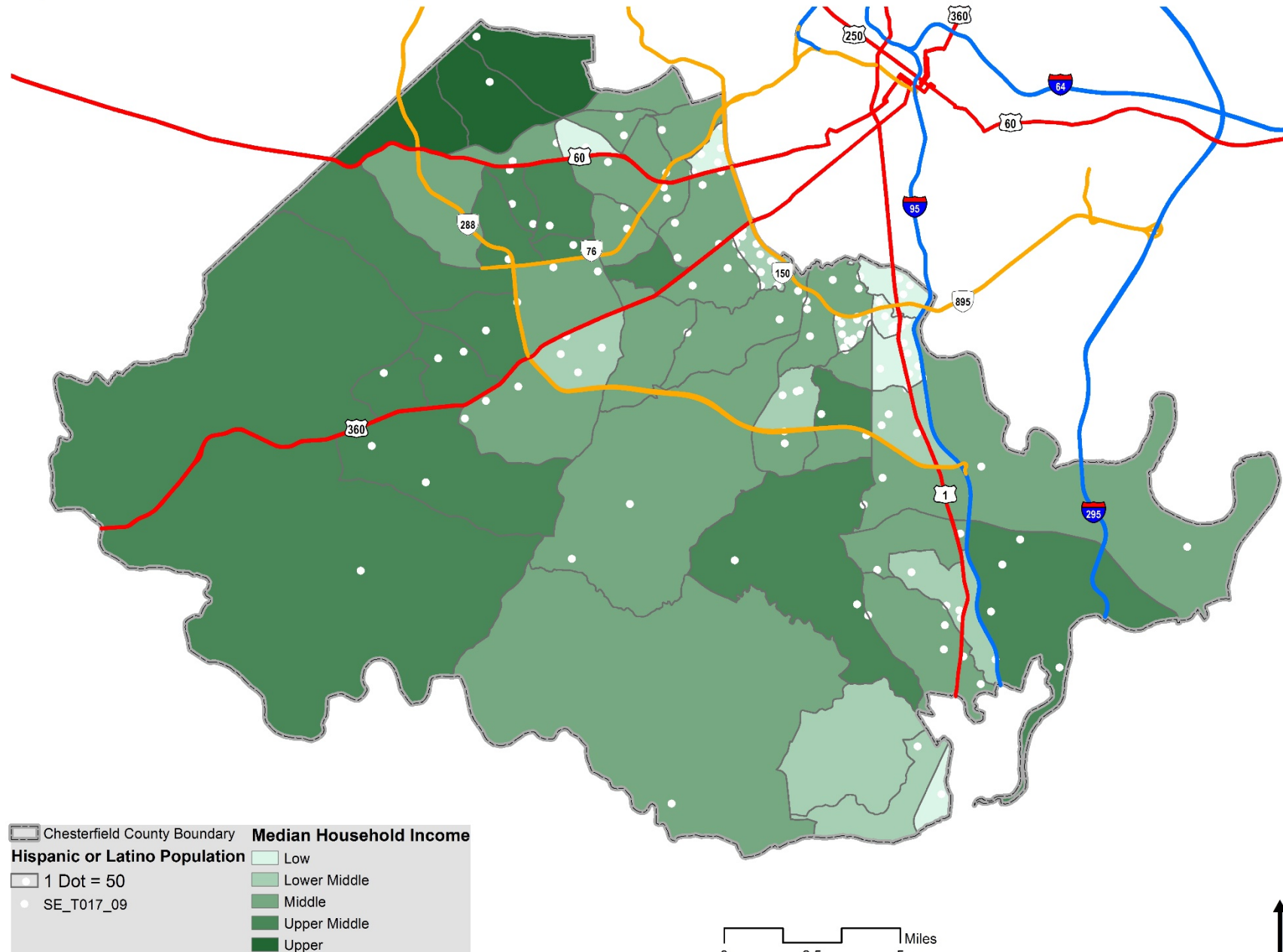
 Upper Middle

 Upper

Source: US Census Bureau
ACS 2009-2013

T. Dillon Massey

Hispanic or Latino Population and Median Household Income, 2000



Chesterfield County Boundary

Hispanic or Latino Population

1 Dot = 50

SE_T017_09

Median Household Income

Low

Lower Middle

Middle

Upper Middle

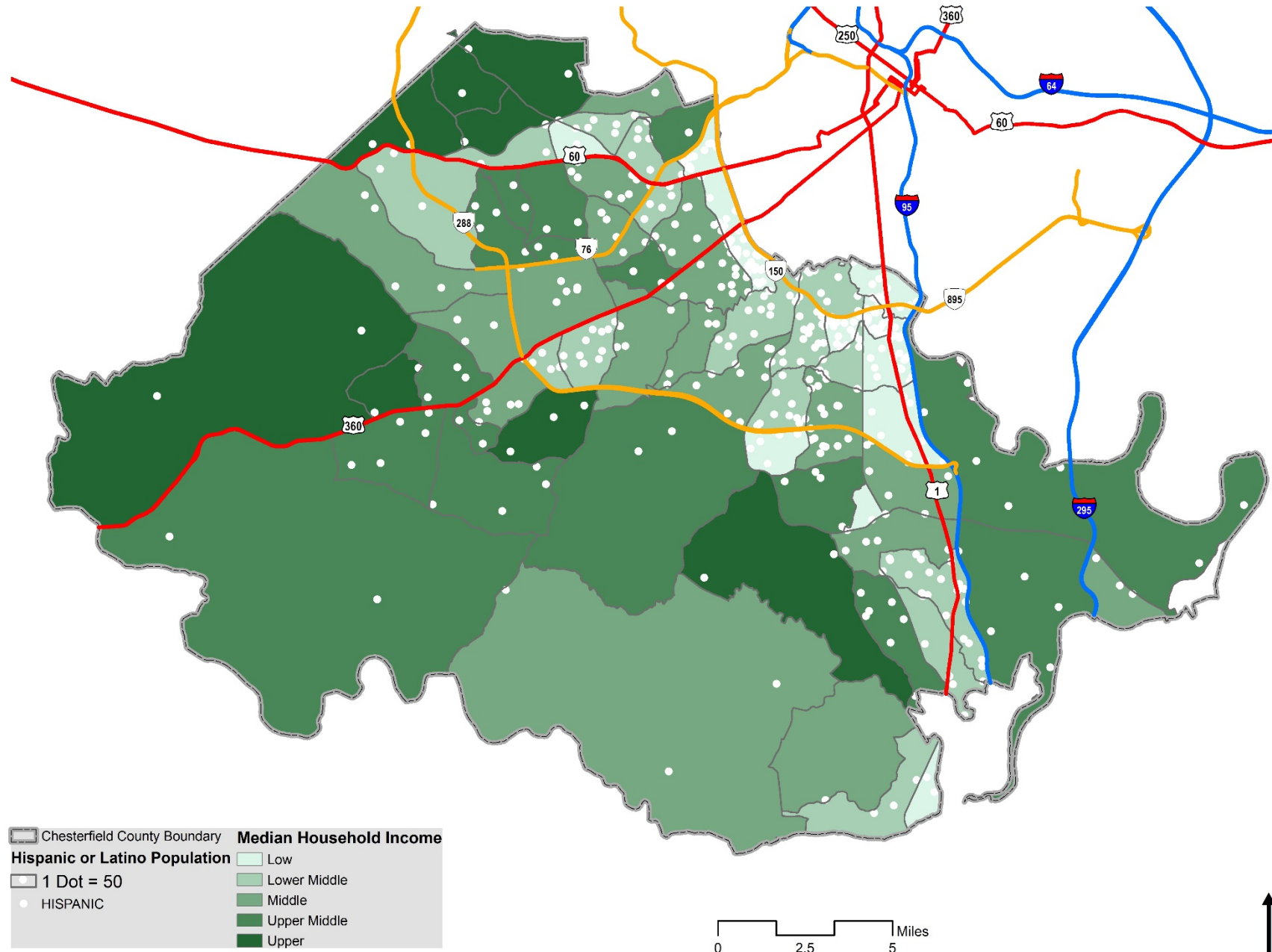
Upper

Source: US Census Bureau, 2000

0 2.5 5 Miles

T. Dillon Massey

Hispanic or Latino Population and Median Household Income, 2013



Source: US Census Bureau
ACS 2009-2013

T. Dillon Massey